

SNELLERS

ESTATE AGENTS



Herbert Place, TW7

£775,000

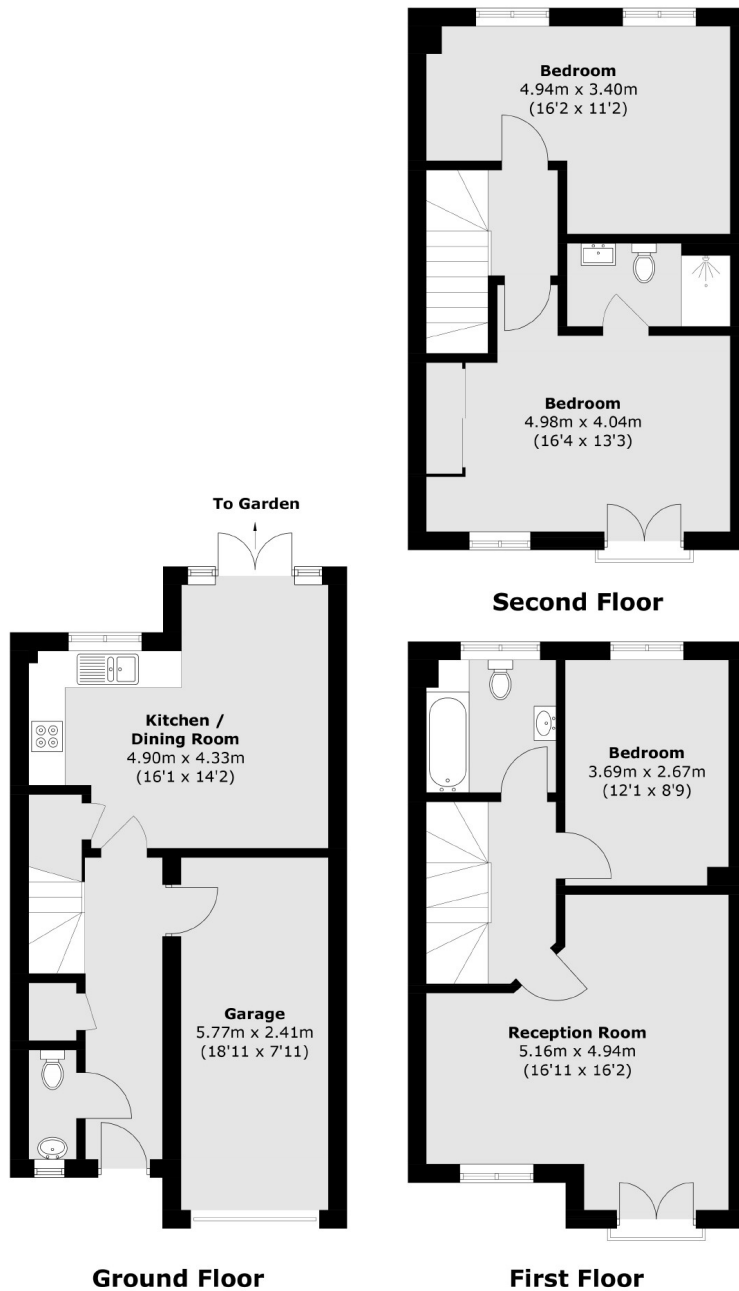
Offered to the market with no onward chain is this beautifully presented and well proportioned three bedroom two bathroom townhouse including off-street parking and an integral garage located within this popular cul-de-sac off Spring Grove Road.

Herbert Place is a quiet cul-de-sac located off Spring Grove Road. The property is well placed for easy access to Osterley tube & Hounslow East tube (Piccadilly Line). The amenities of Isleworth are within easy walking distance and St Margarets & Richmond town centres are also close by.

- Townhouse • Three Double Bedrooms • Two Bathrooms •
- Excellent Condition • Off-Street Parking & Garage • No Chain •

SNELLERS

ESTATE AGENTS



Total area (approx.): 129.7 sq. m (1,396.0 sq. ft)
(Including Garage)

Snellers St. Margarets Sales
36 Crown Road
St Margarets
TW1 3EH
020 8892 8008
stmargaretssales@snellers.co.uk

Energy Rating: We aim to make our particulars both accurate and reliable. However they are not guaranteed; nor do they form part of an offer or contract. If you require clarification on any points then please contact us, especially if you're traveling some distance to view. Please note that appliances and heating systems have not been tested and therefore no warranties can be given as to their good working order