

# SNELLERS

ESTATE AGENTS



## Cambridge Park, TW1

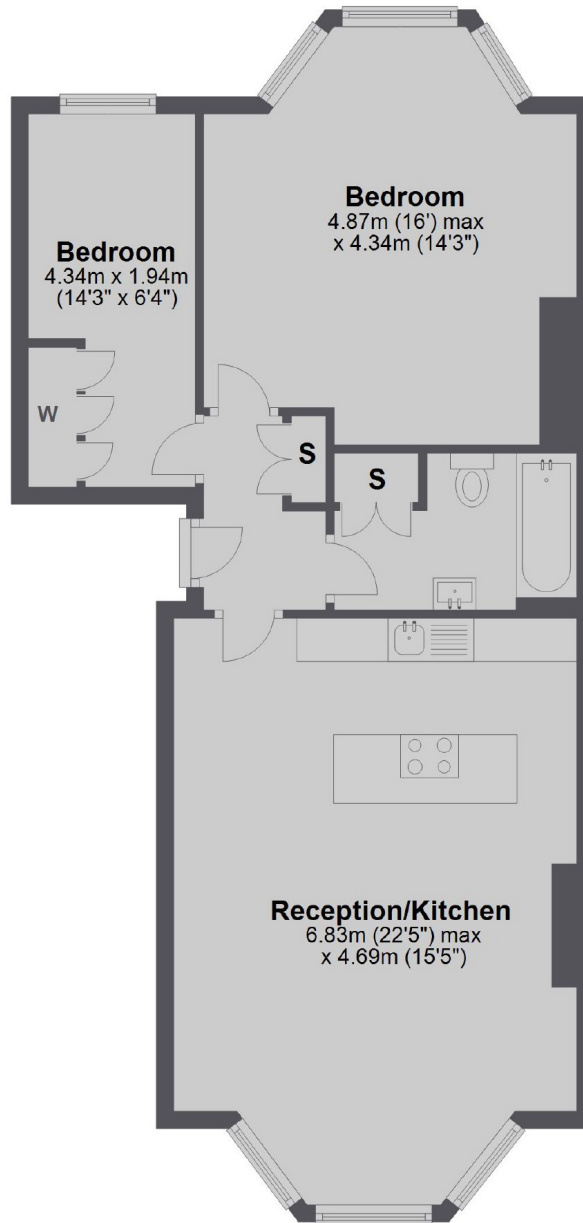
£680,000

A beautifully presented, two bedroom raised ground floor period conversion apartment set on this highly desirable residential road.

Cambridge Park is a premium tree-lined road in East Twickenham, moments away from Marble Hill Park and the array of amenities on offer in St Margarets Village and Richmond town centre.

- Period Conversion • Raised Ground Floor • Two Bedrooms •
- Large Reception Room • Excellent Condition • Envious Location •

## Ground Floor



Total area: approx. 66.1 sq. metres (711.6 sq. feet)

Snellers St. Margarets Sales  
36 Crown Road  
St Margarets  
TW1 3EH  
020 8892 8008  
[stmargaretssales@snellers.co.uk](mailto:stmargaretssales@snellers.co.uk)

Energy Rating: D We aim to make our particulars both accurate and reliable. However they are not guaranteed; nor do they form part of an offer or contract. If you require clarification on any points then please contact us, especially if you're traveling some distance to view. Please note that appliances and heating systems have not been tested and therefore no warranties can be given as to their good working order