

Union Lane, TW7

£375,000

A fantastic opportunity to purchase a larger than average, top floor, dual aspect two bedroom modern apartment located in the highly sought after Union Lane development.

The accommodation offers a spacious entrance hallway, storage cupboards, a master bedroom, a further generous double bedroom with built in storage space, a contemporary family bathroom and a large open plan reception room/kitchen with a door leading onto a balcony.

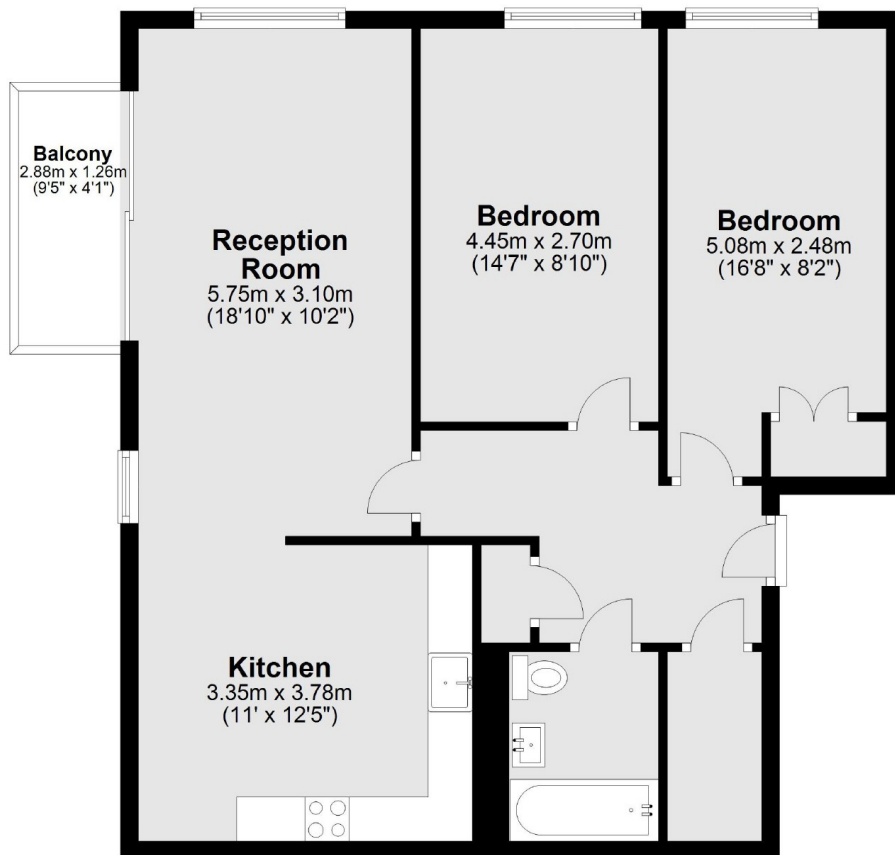
The property also benefits from lift access and an entry-phone system.

Hardy House is set within the sought after Union Lane development within close walking distance of the river Thames, Syon Park and Syon Lane railway station and within easy access to St Margarets, Twickenham and Richmond.

- Dual Aspect • Top Floor • Two Double Bedrooms •
- Balcony • Long Lease • Great Location •

SNELLERS

ESTATE AGENTS



Main area: Approx. 72.1 sq. metres (776.3 sq. feet)
Plus balconies, approx. 3.6 sq. metres (38.9 sq. feet)

Snellers St. Margarets Sales
36 Crown Road
St Margarets
TW1 3EH
020 8892 8008
stmargaretssales@snellers.co.uk

Energy Rating: B We aim to make our particulars both accurate and reliable. However they are not guaranteed; nor do they form part of an offer or contract. If you require clarification on any points then please contact us, especially if you're traveling some distance to view. Please note that appliances and heating systems have not been tested and therefore no warranties can be given as to their good working order