



Mogden Lane, TW7

£300,000

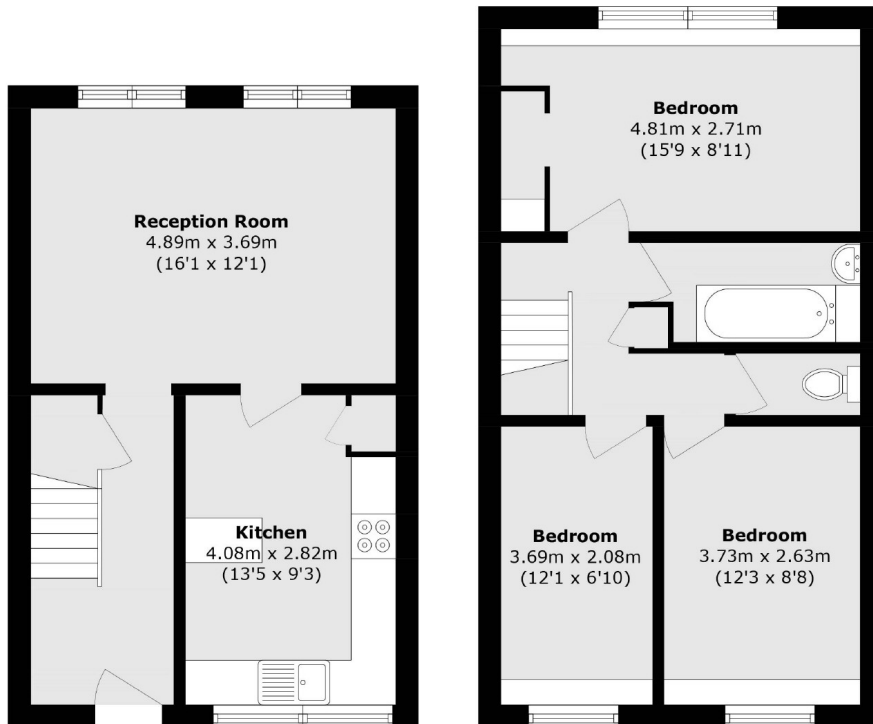
Offered with no onward chain, this charming top-floor, split-level apartment spans 889 sq ft and features three well-proportioned bedrooms, a spacious reception room and a separate kitchen. Additional highlights include a low service charge and two generous storage rooms on the ground floor, ideal for keeping your home clutter-free.

Superbly positioned close to local amenities and a short walk to Twickenham Station and high street with a variety of shops and restaurants. There is easy access to A316 with routes in and out of London.

- Top Floor • Split Level • No Onward Chain •
- Three Bedrooms • Circa 900 Sq Ft • External Storage •

SNELLERS

ESTATE AGENTS



Total area (approx.): 82.6 sq. m (889.1 sq. ft)

Snellers St. Margarets Sales
36 Crown Road
St Margarets
TW1 3EH
020 8892 8008
stmargaretssales@snellers.co.uk

Energy Rating: We aim to make our particulars both accurate and reliable. However they are not guaranteed; nor do they form part of an offer or contract. If you require clarification on any points then please contact us, especially if you're traveling some distance to view. Please note that appliances and heating systems have not been tested and therefore no warranties can be given as to their good working order