



Cambridge Park, TW1

£600,000

Enviably positioned within this sought after private gated riverside development is this well presented two double bedroom second floor apartment with lift access and views over Marble Hill Park.

The property is in need of some modernisation but enjoys seven acres of landscaped communal gardens, private tennis courts and parking within the development.

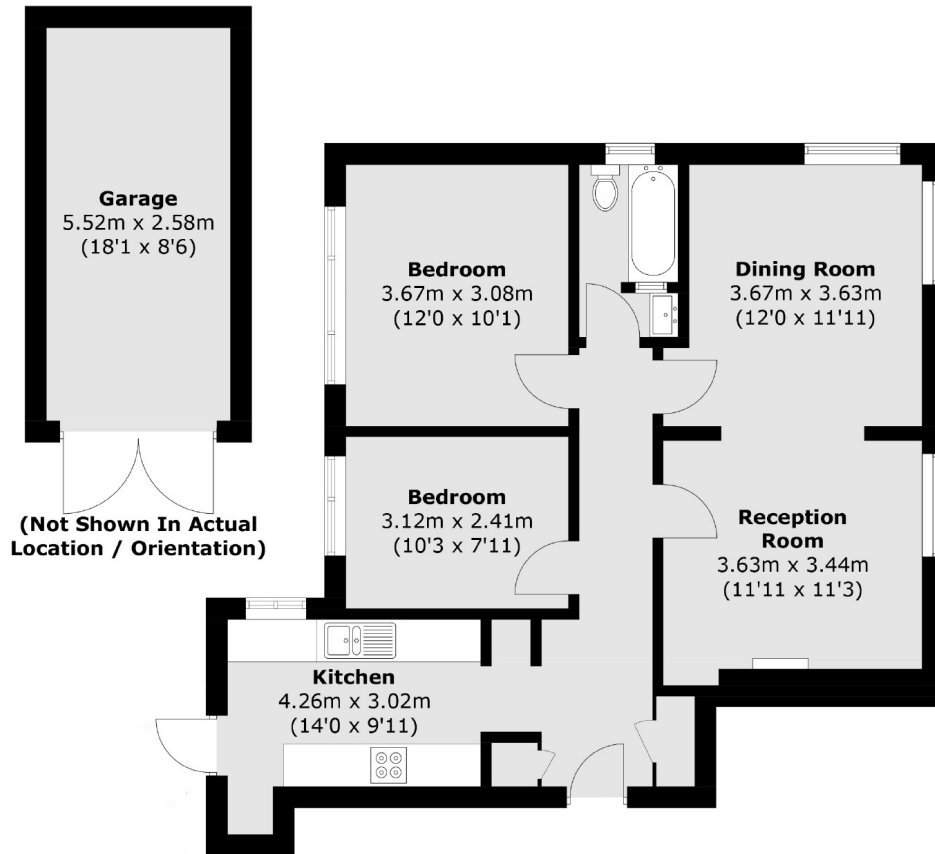
This is being sold with no forward chain and a share of freehold.

Meadowside is a private gated development set by the River Thames within quarter of mile of Richmond town centre and mainline station with fast links into London Waterloo.

- Two Bedrooms • Large Living Space • Higher Floor with Lift •
- Views over the Park • Share of Freehold • No Onward Chain •

SNELLERS

ESTATE AGENTS



Total area (approx.): 70.6 sq. m (759.9 sq. ft)
Garage: 14.6 sq. m (157.1 sq. ft)

Snellers St. Margarets Sales
36 Crown Road
St Margarets
TW1 3EH
020 8892 8008
stmargaretssales@snellers.co.uk

Energy Rating: We aim to make our particulars both accurate and reliable. However they are not guaranteed; nor do they form part of an offer or contract. If you require clarification on any points then please contact us, especially if you're traveling some distance to view. Please note that appliances and heating systems have not been tested and therefore no warranties can be given as to their good working order