

SNELLERS

ESTATE AGENTS



St. Margarets Road, TW1

£550,000

Set within an elegant Victorian building, this stunning ground floor one-bedroom conversion flat has been thoughtfully refurbished to an exceptional standard, combining period charm with modern comfort.

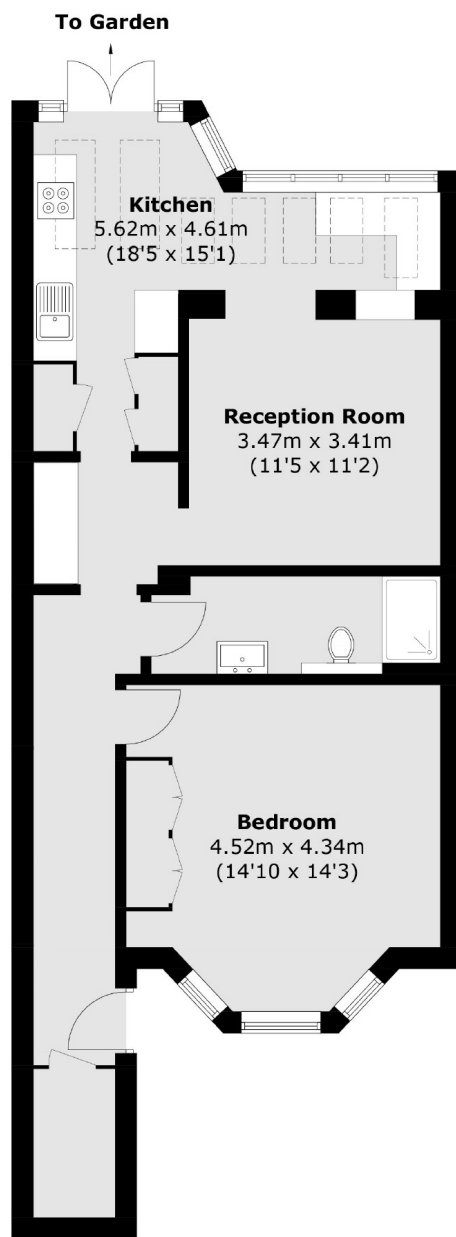
Boasting an impressive sense of space throughout, the property features a large and light-filled kitchen complete with a dedicated dining area - perfect for entertaining, as well as a separate, generously proportioned living room ideal for relaxation. The huge master bedroom offers ample storage and comfort, while the brand new contemporary bathroom adds a sleek finishing touch. Further benefits include a beautifully maintained private garden, offering a peaceful outdoor retreat.

Ideally located with excellent access to Richmond, East Twickenham, and St Margarets, this home is perfectly placed to enjoy the best of the area's cafes, parks, and transport links. A truly exceptional property that must be seen to be fully appreciated.

- Private Garden • Victorian Conversion • Incredibly Spacious •
- High Specification • No Onward Chain • Envious Location •

SNELLERS

ESTATE AGENTS



Lower Ground Floor

Total area (approx.): 67.5 sq. m (726.6 sq. ft)

Snellers St. Margarets Sales
36 Crown Road
St Margarets
TW1 3EH
020 8892 8008
stmargaretssales@snellers.co.uk

Energy Rating: We aim to make our particulars both accurate and reliable. However they are not guaranteed; nor do they form part of an offer or contract. If you require clarification on any points then please contact us, especially if you're traveling some distance to view. Please note that appliances and heating systems have not been tested and therefore no warranties can be given as to their good working order