

SNELLERS

ESTATE AGENTS



Gordon Avenue, TW1

£600,000

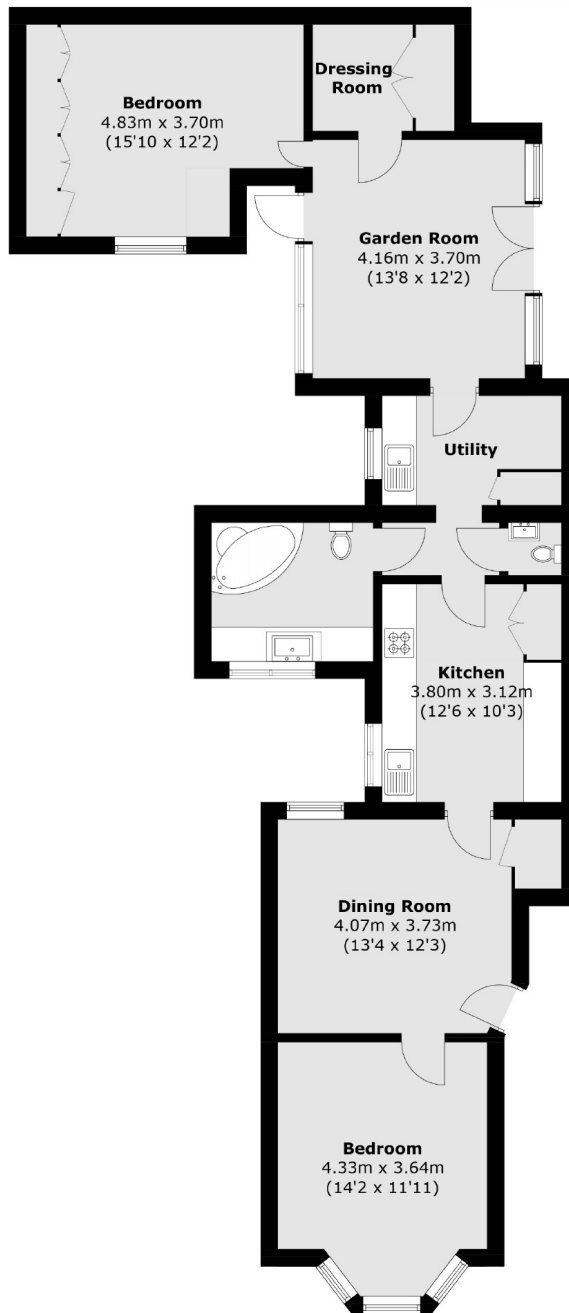
This two bedroom conversion garden flat is arguably one of the biggest in the area, with definitely the biggest private garden. The property has been smartly extended to provide ample living space and over 1,000 square feet in total. The garden is incredibly private and backs onto the River Crane.

Gordon Avenue is a beautiful residential road located just moments from St Margarets Village, providing easy access to local shops and eateries, as well as the River Thames.

- Ground Floor Flat • Two Double Bedrooms • Large Private Garden •
- Long Lease • Quiet Residential Road • Convenient Location •

SNELLERS

ESTATE AGENTS



Total area (approx.): 99.6 sq. m (1,072.1 sq. ft)

Snellers St. Margarets Sales
36 Crown Road
St Margarets
TW1 3EH
020 8892 8008
stmargaretssales@snellers.co.uk

Energy Rating: We aim to make our particulars both accurate and reliable. However they are not guaranteed; nor do they form part of an offer or contract. If you require clarification on any points then please contact us, especially if you're traveling some distance to view. Please note that appliances and heating systems have not been tested and therefore no warranties can be given as to their good working order