

SNELLERS

ESTATE AGENTS



Orchard Road, TW1

£1,320,000

An Exceptional Edwardian Home with Outstanding Space and Potential

Located on a quiet and desirable road within walking distance of St. Margarets village, this substantial five-bedroom Edwardian terraced house offers generous proportions, classic period features, and an unusually large rear garden - significantly bigger than those found on surrounding streets.

Lovely held by the same family for nearly four decades, this elegant home retains much of its original charm, with high ceilings, large rooms, and elegant architectural details throughout. It's a property full of warmth and character, ready for a new family to make it their own.

There is excellent potential to extend or reconfigure the layout to suit modern needs (subject to necessary consents), making this a rare opportunity to create a truly special home in a peaceful yet well-connected location. The huge rear garden is a standout feature, ideal for outdoor entertaining, children's play, or future expansion.

With its combination of space, charm, and potential, and just a short stroll from the shops, cafés, and transport links of St. Margarets, this is a home not to be missed.

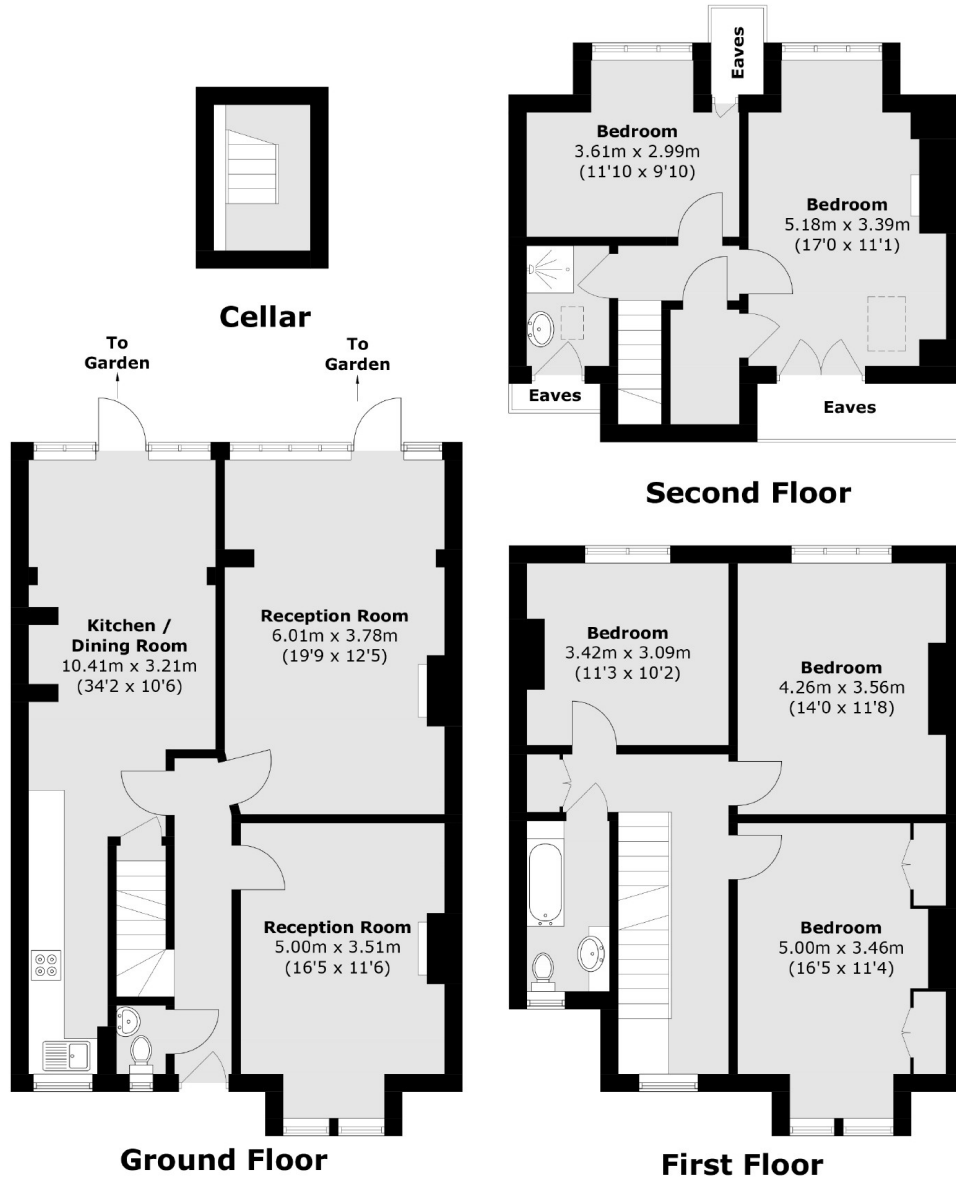


- Edwardian • Five Bedrooms • Huge Garden •
- Period Features • Desirable Road • Potential to Extend (STPP) •



SNELLERS

ESTATE AGENTS



Total area (approx.): 175.9 sq. m (1,893.4 sq. ft)
(Including Cellar / Excluding Eaves)

Snellers St. Margarets Sales
36 Crown Road
St Margarets
TW1 3EH
020 8892 8008
stmargaretssales@snellers.co.uk

Energy Rating: We aim to make our particulars both accurate and reliable. However they are not guaranteed; nor do they form part of an offer or contract. If you require clarification on any points then please contact us, especially if you're traveling some distance to view. Please note that appliances and heating systems have not been tested and therefore no warranties can be given as to their good working order