

SNELLERS

ESTATE AGENTS



St. Margarets Road, TW1

£500,000

A recently fully renovated large double bedroom lower ground floor Victorian conversion maisonette with direct access to a generous private rear garden enviably located in St. Margarets, moments away from Richmond.



The accommodation offers a large bay fronted reception room, a modern galley kitchen, a spacious double bedroom with walk in wardrobe and a generous private garden.

The property also benefits from multiple storage cupboards, additional separate WC and sold no chain.

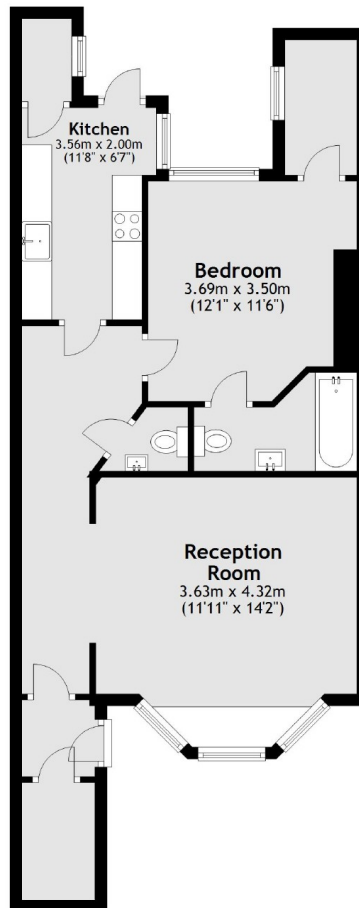
St. Margarets Road is ideally situated for bus and train links into Central London, moments away from Richmond offering an array of amenities and excellent transport links.

- Victorian Conversion • Large Double Bedroom • Excellent Condition •
- Private Entrance • Private Garden • No Chain •



SNELLERS

ESTATE AGENTS



Total area: approx. 60.5 sq. metres (651.2 sq. feet)

Snellers St. Margarets Sales
36 Crown Road
St Margarets
TW1 3EH
020 8892 8008
stmargaretssales@snellers.co.uk

Energy Rating: We aim to make our particulars both accurate and reliable. However they are not guaranteed; nor do they form part of an offer or contract. If you require clarification on any points then please contact us, especially if you're traveling some distance to view. Please note that appliances and heating systems have not been tested and therefore no warranties can be given as to their good working order