

SNELLERS

ESTATE AGENTS



Orchard Road, TW1

£635,000

An immaculately presented, two bedroom ground floor Victorian maisonette with a substantial south-facing private garden enviably located on this quiet cul-de-sac, moments away from St Margarets Village.



Retaining its original period features and tastefully decorated throughout the accommodation offers a bay fronted master bedroom, a second bedroom, a cellar, a modern bathroom and utility area, a contemporary kitchen plus an open plan dining area, a large bright reception room with double doors out onto a substantial south facing garden.

Orchard road is a quiet residential cul-de sac set within a quarter of a mile from St Margarets Village with its mainline train station, excellent schools and Moor Mead Park.

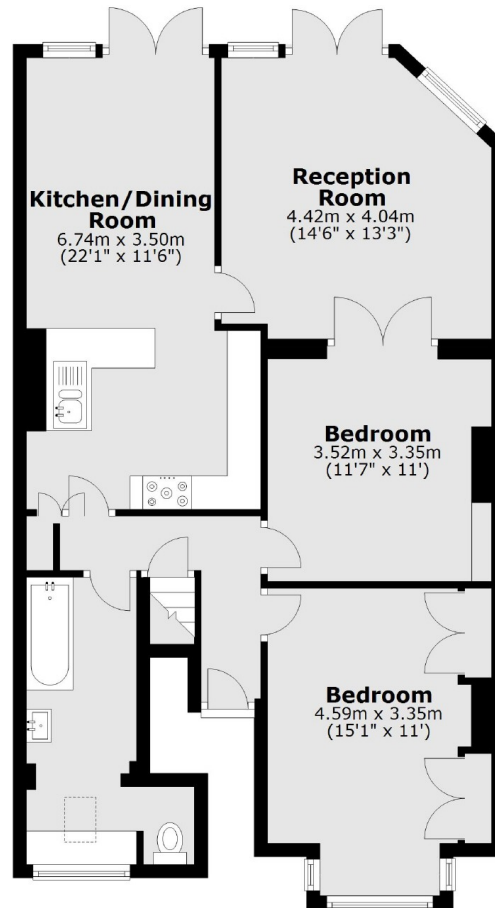
- Ground Floor • Victorian Maisonette • Great Condition •
- Two Bedrooms • South-Facing Garden • Cellar •



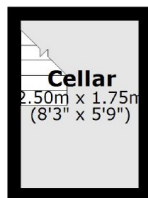
SNELLERS

ESTATE AGENTS

Ground Floor



Basement



Total area: approx. 82.8 sq. metres (891.7 sq. feet)

Snellers St. Margarets Sales
36 Crown Road
St Margarets
TW1 3EH
020 8892 8008
stmargaretssales@snellers.co.uk

Energy Rating: C We aim to make our particulars both accurate and reliable. However they are not guaranteed; nor do they form part of an offer or contract. If you require clarification on any points then please contact us, especially if you're traveling some distance to view. Please note that appliances and heating systems have not been tested and therefore no warranties can be given as to their good working order