



## Claremont Road, TW1

£495,000

Charming One Bedroom Garden Flat in the Heart of St Margarets Village

Nestled on the sought-after Claremont Road in the heart of St Margarets Village, this beautifully presented one-bedroom ground floor flat forms part of an attractive Victorian conversion, offering the perfect blend of period charm and modern convenience.

The property boasts a private rear garden, ideal for relaxing or entertaining, which further benefits from a versatile garden studio - perfect for a home office, creative space, or guest accommodation.

Internally, the flat features well-proportioned rooms, high ceilings, and large sash windows that allow for plenty of natural light throughout. The living space is both practical and inviting, while the kitchen and bathroom are well-appointed and tastefully finished.

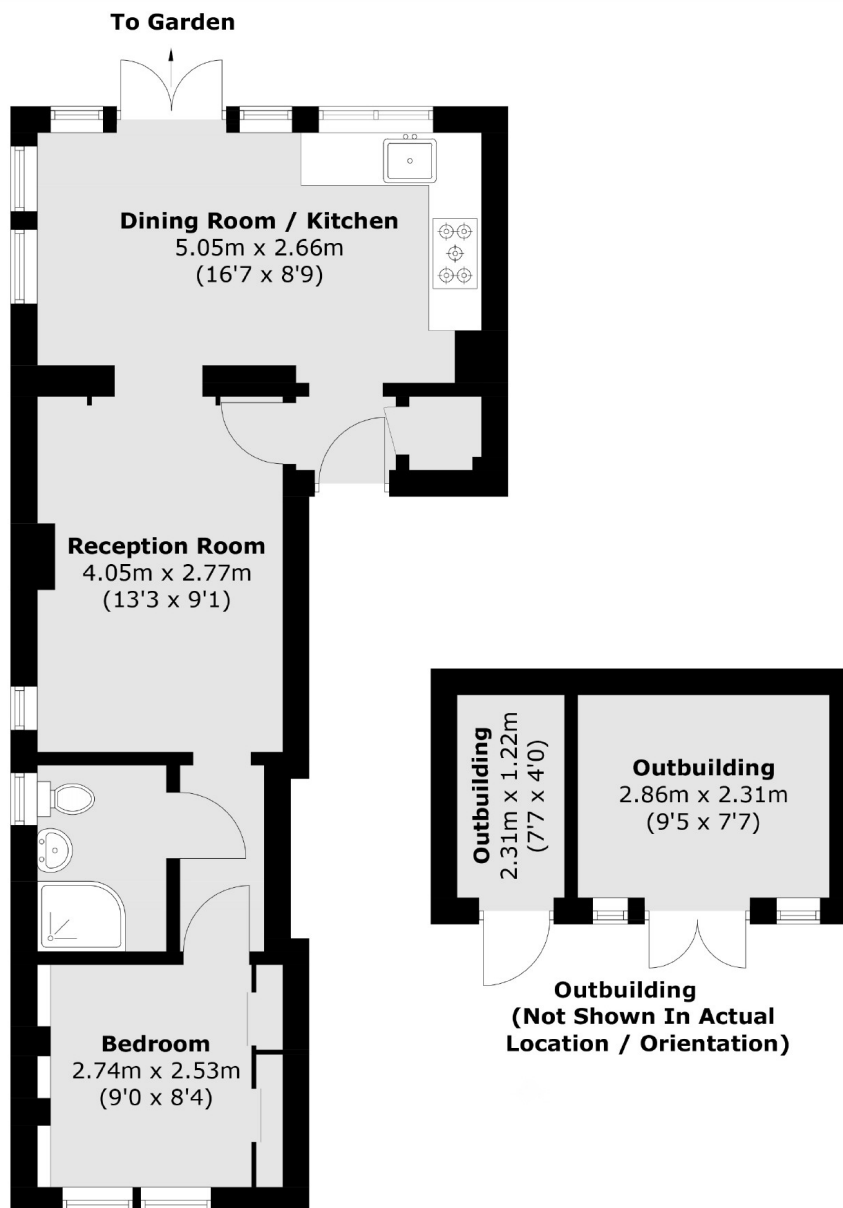
Additional highlights include a share of freehold and no onward chain, making this a fantastic opportunity for first-time buyers, downsizers, or investors alike.

Located just moments from the charming boutiques, cafés, and green spaces of St Margarets, and within easy reach of transport links and the River Thames, this is a rare opportunity not to be missed.

- Victorian Conversion • Ground Floor Flat • Private Rear Garden •
- Garden Studio • Share of Freehold • No Onward Chain •

# SNELLERS

ESTATE AGENTS



Total area (approx.): 42.0 sq. m (452.0 sq. ft)  
*Outbuilding* (approx.): 10.1 sq. m (108.7 sq. ft)

Snellers St. Margarets Sales  
36 Crown Road  
St Margarets  
TW1 3EH  
020 8892 8008  
[stmargaretssales@snellers.co.uk](mailto:stmargaretssales@snellers.co.uk)

Energy Rating: We aim to make our particulars both accurate and reliable. However they are not guaranteed; nor do they form part of an offer or contract. If you require clarification on any points then please contact us, especially if you're traveling some distance to view. Please note that appliances and heating systems have not been tested and therefore no warranties can be given as to their good working order