



Kings Road, TW10

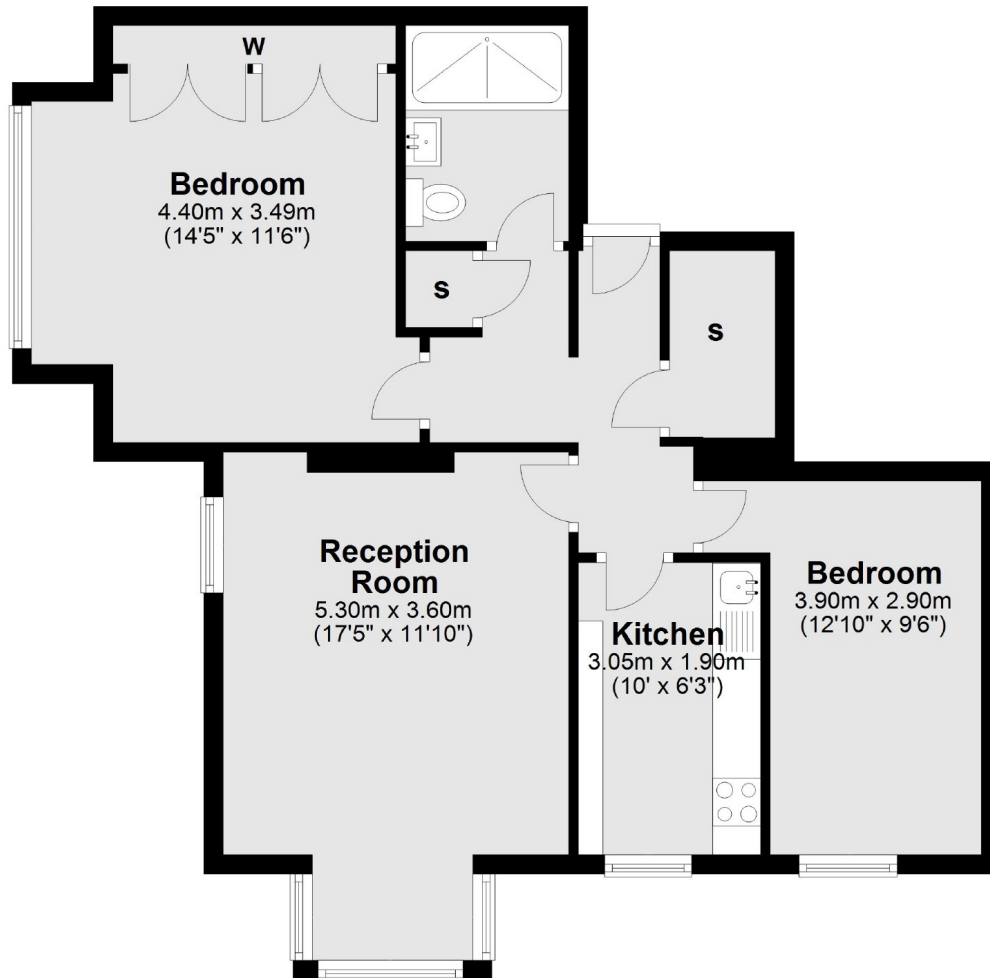
£650,000

Offered to the market with no onward chain and set within this imposing detached house is this beautifully presented raised ground floor two bedroom period conversion apartment.

Kings Road is located on Richmond Hill within easy access of an excellent array of amenities in Richmond Town centre including the station which offers fast links into Central London via both the underground and overland trains.

- Period Conversion • Two Bedrooms • No Chain •
- Share of Freehold • Communal Gardens • Off-Street Parking •

Ground Floor



Total area: approx. 62.3 sq. metres (670.9 sq. feet)

Snellers St. Margarets Sales
36 Crown Road
St Margarets
TW1 3EH
020 8892 8008
stmargaretssales@snellers.co.uk

Energy Rating: D We aim to make our particulars both accurate and reliable. However they are not guaranteed; nor do they form part of an offer or contract. If you require clarification on any points then please contact us, especially if you're traveling some distance to view. Please note that appliances and heating systems have not been tested and therefore no warranties can be given as to their good working order