

SNELLERS

ESTATE AGENTS



Sidney Road, TW1

£675,000

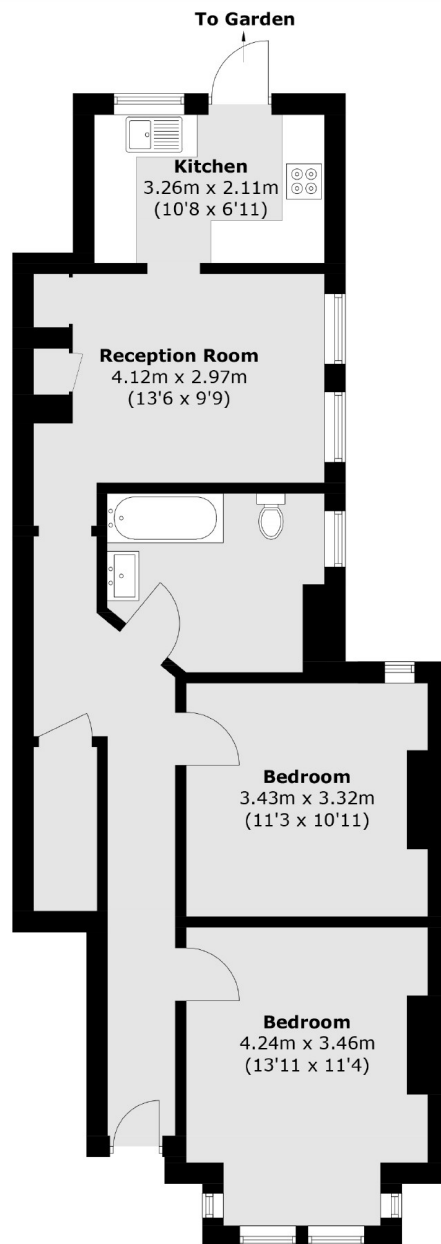
A beautifully presented two bedroom Edwardian maisonette located in one of St Margarets most desirable roads. Over 700 square feet of living space and direct access to the private south facing garden.

Sidney Road falls within catchments of some outstanding local schools. Further benefits is its proximity to St Margarets High Street with its wide selection of restaurants, bistros and mainline station.

- Two Double Bedrooms • Private Garden • Tastefully Refurbished •
- No Onward Chain • Desirable Location • Long Lease •

SNELLERS

ESTATE AGENTS



Total area (approx.): 67.4 sq. m (725.5 sq. ft)

Snellers St. Margarets Sales
36 Crown Road
St Margarets
TW1 3EH
020 8892 8008
stmargaretssales@snellers.co.uk

Energy Rating: We aim to make our particulars both accurate and reliable. However they are not guaranteed; nor do they form part of an offer or contract. If you require clarification on any points then please contact us, especially if you're traveling some distance to view. Please note that appliances and heating systems have not been tested and therefore no warranties can be given as to their good working order