



## Primrose Place, TW7

£450,000

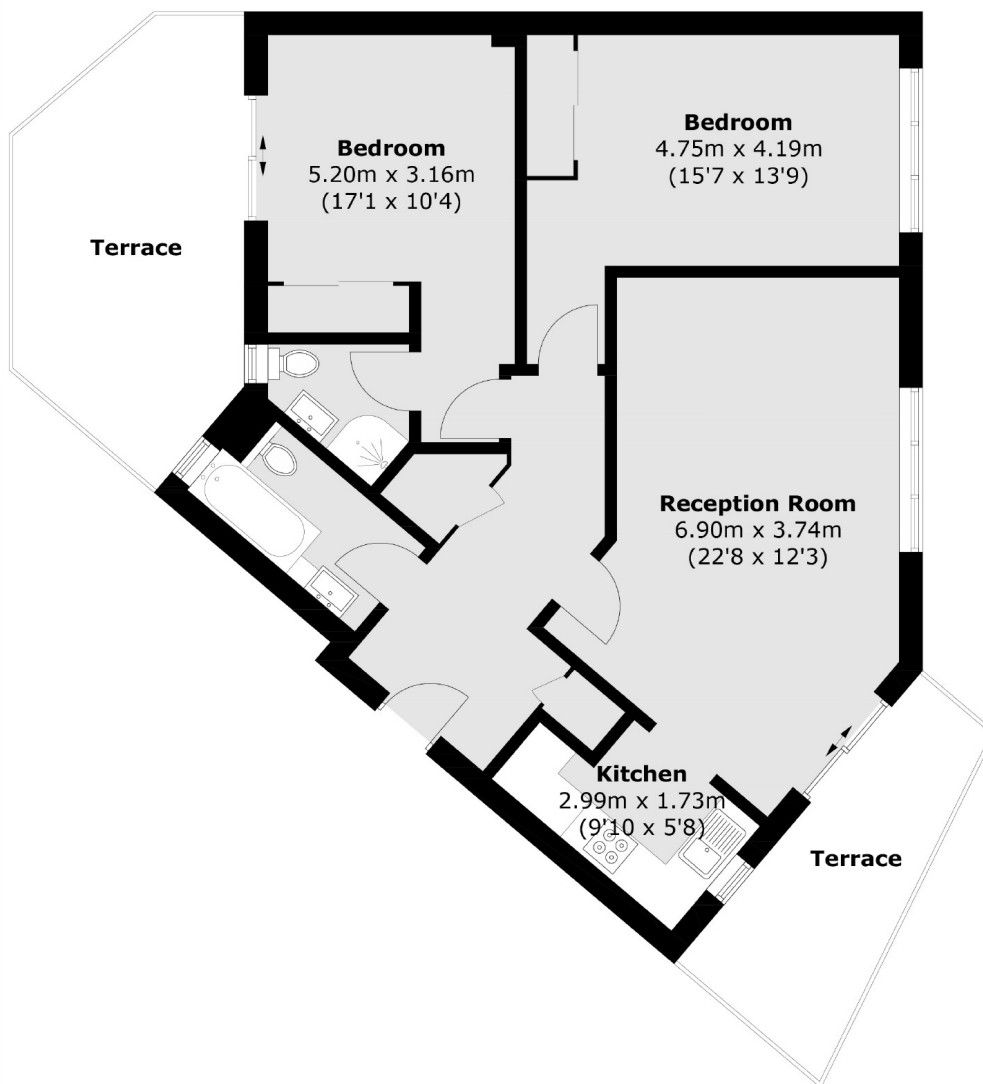
This spacious two bedroom ground floor flat has been fully refurbished throughout, with a new kitchen, bathroom, decor and doors and windows too. There is plenty of storage, as well as two private terraces, a communal garden and an allocated parking space.

Primrose Place is conveniently located just round the corner from Isleworth high street and mainline railway station, offering easy access into London and plenty of shops and restaurants on your doorstep.

- Two Double Bedrooms • Private Terrace • Communal Garden •
- Fully Refurbished • Allocated Parking • Share of Freehold •

# SNELLERS

ESTATE AGENTS



Total area (approx.): 77.1 sq. m (829.9 sq. ft)  
Terrace: 22.9 sq. m (246.4 sq. ft)

Snellers St. Margarets Sales  
36 Crown Road  
St Margarets  
TW1 3EH  
020 8892 8008  
[stmargaretssales@snellers.co.uk](mailto:stmargaretssales@snellers.co.uk)

Energy Rating: We aim to make our particulars both accurate and reliable. However they are not guaranteed; nor do they form part of an offer or contract. If you require clarification on any points then please contact us, especially if you're traveling some distance to view. Please note that appliances and heating systems have not been tested and therefore no warranties can be given as to their good working order