

SNELLERS

ESTATE AGENTS



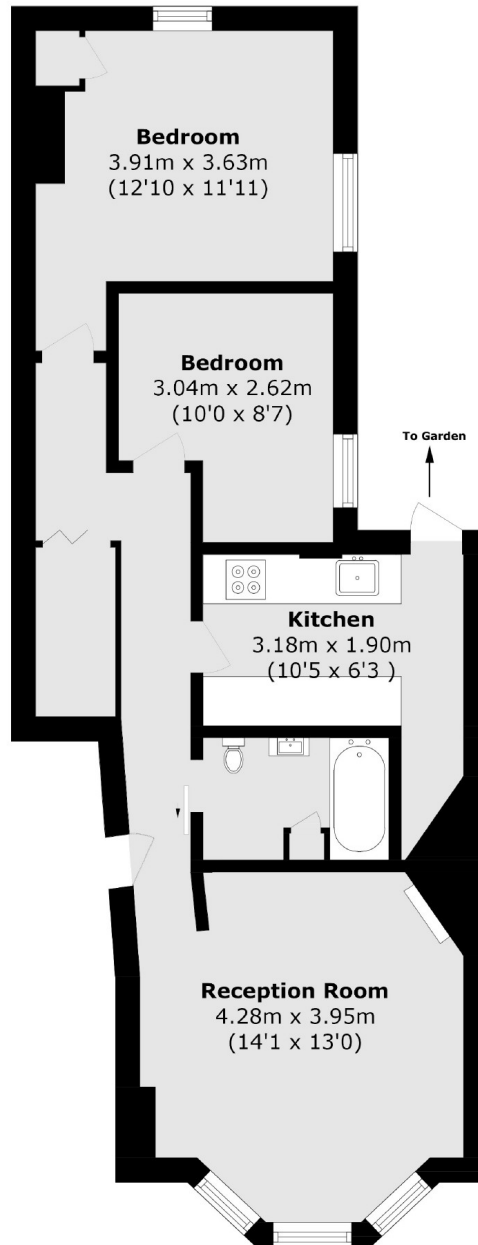
Amyand Park Road, TW1

£575,000

This two bedroom Victorian conversion garden flat has been smartly refurbished throughout. There is a modern fitted kitchen and bathroom, re-insulated and sound proofed ceilings and windows, tranquil private garden and the owners have a right to manage.

Moments from the centre of St Margarets Village, Amyand Park Road offers easy access to local shops and eateries, as well as being close to the River Thames and Richmond Town Centre.

- Two Bedrooms • Private Garden • High Ceilings •
- Period Features • Modern Specification • Right to Manage •



Total area (approx.): 56.7 sq. m (610.3 sq. ft)

Snellers St. Margarets Sales
36 Crown Road
St Margarets
TW1 3EH
020 8892 8008
stmargaretssales@snellers.co.uk

Energy Rating: We aim to make our particulars both accurate and reliable. However they are not guaranteed; nor do they form part of an offer or contract. If you require clarification on any points then please contact us, especially if you're traveling some distance to view. Please note that appliances and heating systems have not been tested and therefore no warranties can be given as to their good working order