

SNELLERS

ESTATE AGENTS



Godstone Road, TW1

£580,000

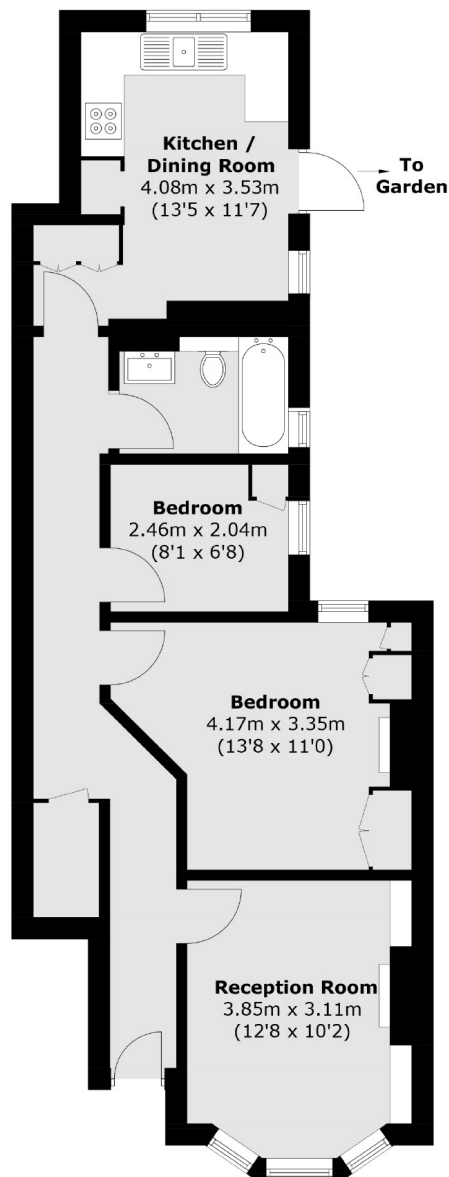
A well presented, two bedroom ground floor period maisonette set on this highly sought after residential road in St Margarets village.

Godstone road is located in one of St Margarets most popular roads and is a short walk away from the train station, village and Moor Mead park.

- Ground Floor Maisonette • Two Bedrooms • Great Condition •
- Shared Garden • Period Property • Great Transport Links •

SNELLERS

ESTATE AGENTS



Total area (approx.): 60.8 sq. m (654.4 sq. ft)

Snellers St. Margarets Sales
36 Crown Road
St Margarets
TW1 3EH
020 8892 8008
stmargaretssales@snellers.co.uk

Energy Rating: We aim to make our particulars both accurate and reliable. However they are not guaranteed; nor do they form part of an offer or contract. If you require clarification on any points then please contact us, especially if you're traveling some distance to view. Please note that appliances and heating systems have not been tested and therefore no warranties can be given as to their good working order