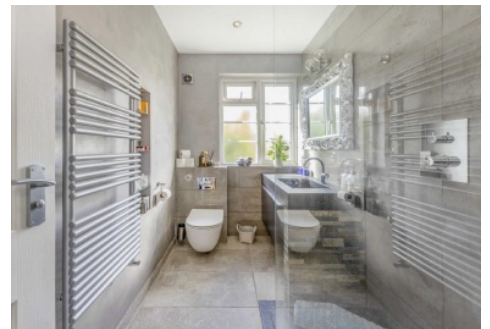


SNELLERS

ESTATE AGENTS



Queens Keep, TW1

£549,950

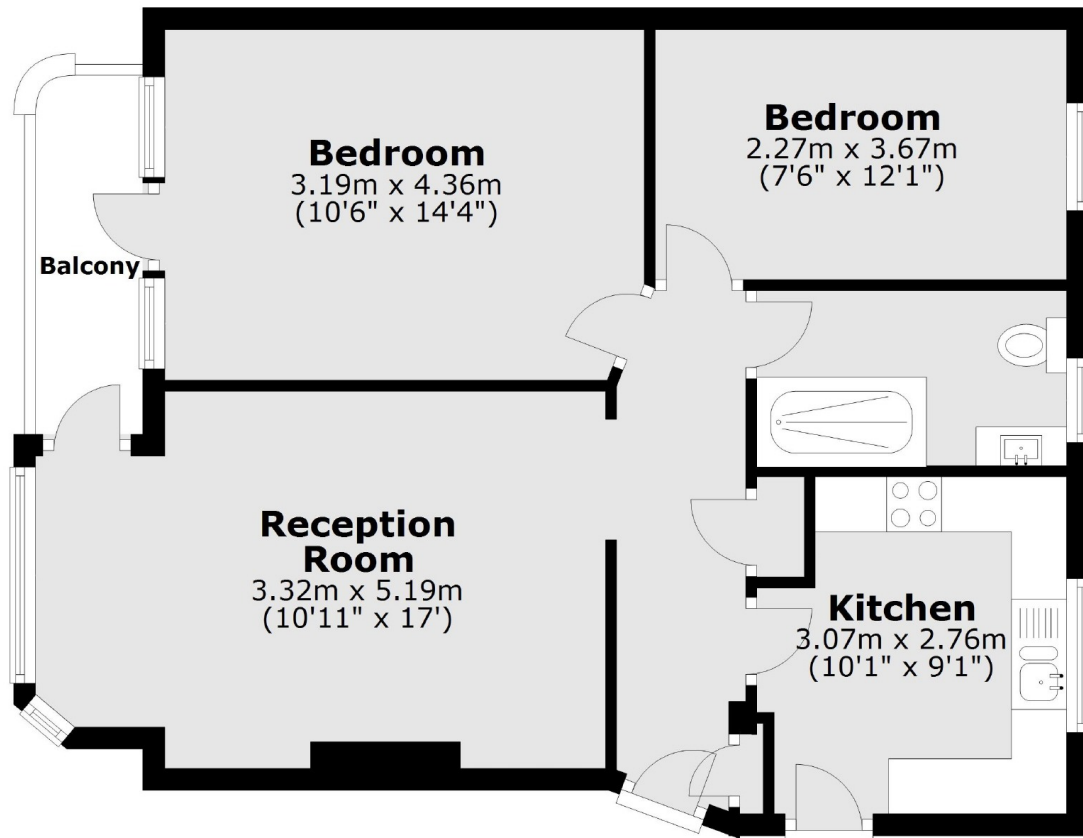
Set within an impressive Art Deco building and enviably located moments away from Richmond bridge is this well presented, two bedroom second floor apartment with the added bonus of a private garage and offered to the market with no onward chain.

Queens Keep is situated on Park Road, moments from Richmond Bridge and the banks of the River Thames. Richmond with its mainline train station and District Line underground service is only 0.8 miles away. St Margarets mainline station is 0.4 miles away.

- Second Floor • Two Bedrooms • Private Balcony •
- Garage • No Chain • Excellent Location •

SNELLERS

ESTATE AGENTS



Total area: approx. 59.5 sq. metres (640.1 sq. feet)

Snellers St. Margarets Sales
36 Crown Road
St Margarets
TW1 3EH
020 8892 8008
stmargaretssales@snellers.co.uk

Energy Rating: We aim to make our particulars both accurate and reliable. However they are not guaranteed; nor do they form part of an offer or contract. If you require clarification on any points then please contact us, especially if you're traveling some distance to view. Please note that appliances and heating systems have not been tested and therefore no warranties can be given as to their good working order