

SNELLERS

ESTATE AGENTS



Morley Road, TW1

£2,500 PCM

This spacious two double bedroom ground floor garden flat has a large open-plan kitchen / reception with wooden floors and a feature fireplace, two bedrooms (principle with access to the private rear garden) and a stylish bathroom suite.



Offering access to a wide selection of local shops and restaurants, Morley Road is located just off Richmond Road and only 0.2 miles from Richmond Bridge and the river Thames.

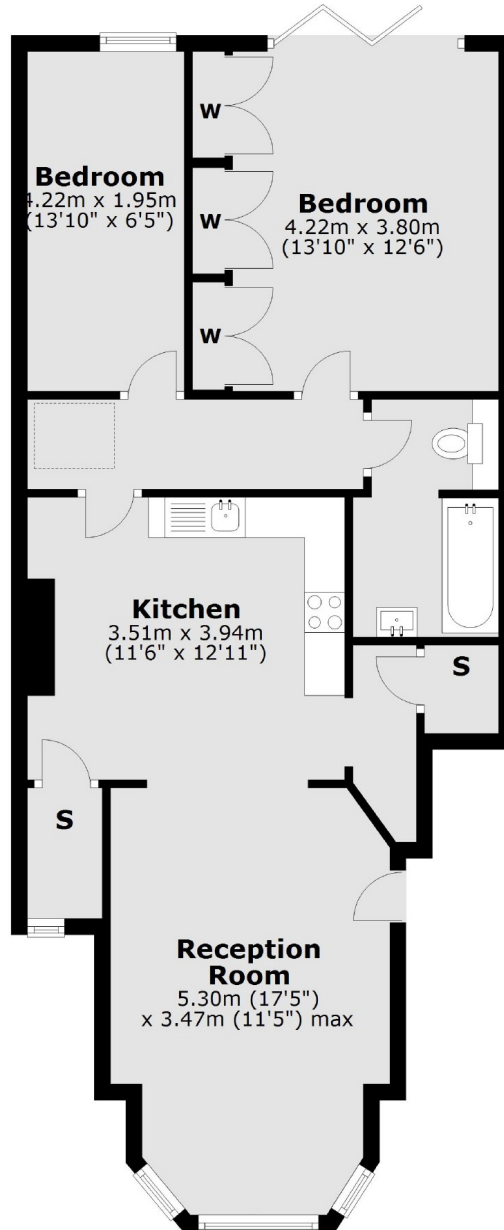
- Period Conversion • Ground Floor Flat • Modern Throughout •
- Two Bedrooms • Private Garden • Great Location •



SNELLERS

ESTATE AGENTS

Ground Floor



Total area: approx. 71.5 sq. metres (769.5 sq. feet)

Snellers St. Margarets Lettings
36 Crown Road
St Margarets
TW1 3EH
020 8892 0700
stmargaretslettings@snellers.co.uk

Energy Rating: C We aim to make our particulars both accurate and reliable. However they are not guaranteed; nor do they form part of an offer or contract. If you require clarification on any points then please contact us, especially if you're traveling some distance to view. Please note that appliances and heating systems have not been tested and therefore no warranties can be given as to their good working order