

SNELLERS

ESTATE AGENTS



Strand Drive, TW9

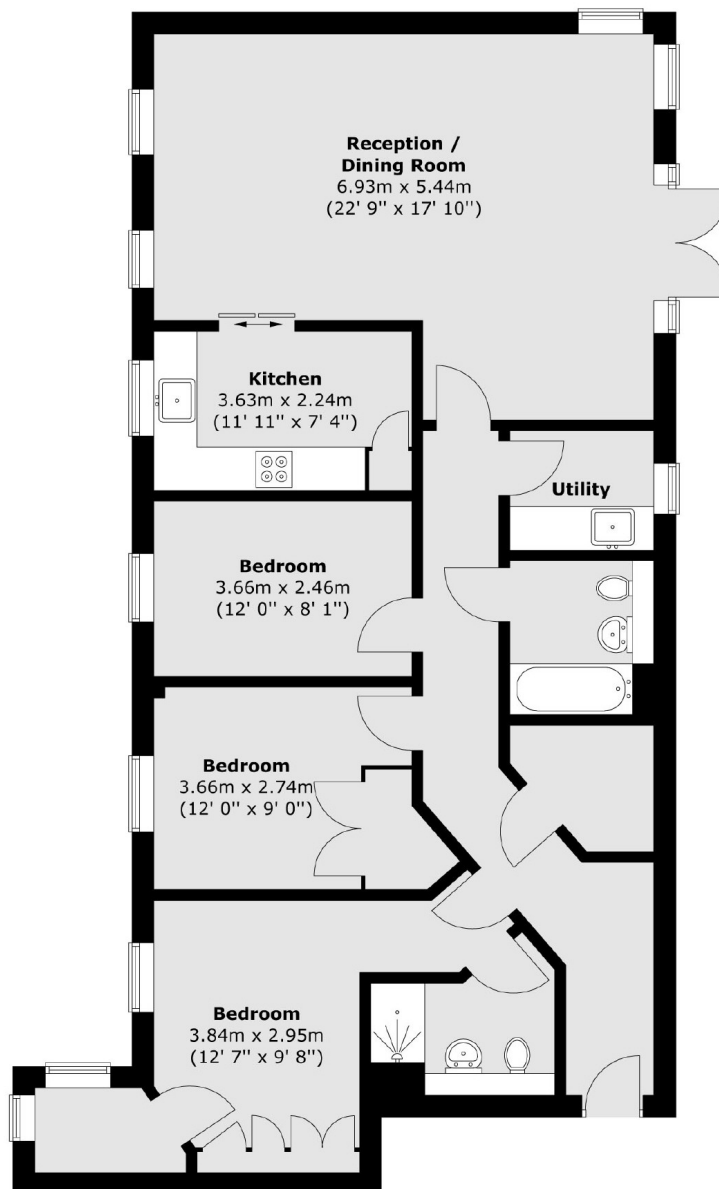
£850,000

This impressive three bedroom, two bathroom, first floor flat is almost 1,200 square feet in size and is coming to the market with no onward chain. This is perfect for a local downside or Pied-à-terre. The property also has a private garden overlooking the communal gardens and a utility room too!

Strand Drive is a desirable private road on the edge of the River Thames, with easy access to Kew Gardens underground station and Kew Retail Park, as well as a selection of cafes and restaurants.

- Three Double Bedrooms • Two Bathrooms • Private Balcony •
- Communal Gardens • Concierge • No Onward Chain •

First Floor



Total area (approx.) : 110.8 sq. m (1192 sq. ft)

Snellers St. Margarets Sales
36 Crown Road
St Margarets
TW1 3EH
020 8892 8008
stmargaretssales@snellers.co.uk

Energy Rating: We aim to make our particulars both accurate and reliable. However they are not guaranteed; nor do they form part of an offer or contract. If you require clarification on any points then please contact us, especially if you're traveling some distance to view. Please note that appliances and heating systems have not been tested and therefore no warranties can be given as to their good working order