



## Bardolph Road, TW9

£545,000

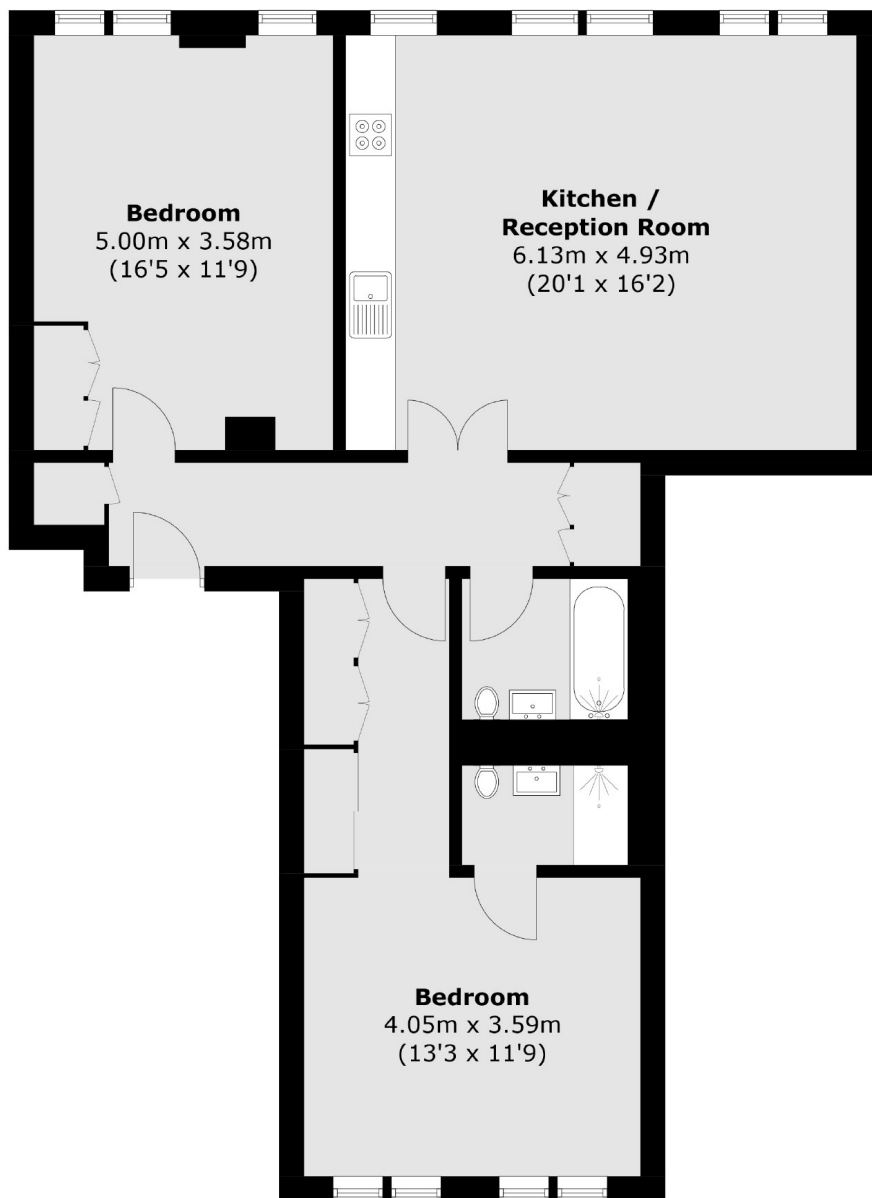
With nearly 1,000 square feet of living space, this incredibly modern two bedroom, two bathroom, first floor flat is coming to the market with no onward chain.

Bardolph Road is a fantastic location for everything you could need - North Sheen Railway station just round the corner, as well as some outstanding local schools and Richmond High Street.

- Incredibly Spacious • Top Floor Flat • Two Double Bedrooms •
- Two Bathrooms • Immaculate Specification • Desirable Location •

# SNELLERS

ESTATE AGENTS



## First Floor

Total area (approx.): 89.2 sq. m (960.1 sq. ft)

Snellers St. Margarets Sales  
36 Crown Road  
St Margarets  
TW1 3EH  
020 8892 8008  
[stmargaretssales@snellers.co.uk](mailto:stmargaretssales@snellers.co.uk)

Energy Rating: We aim to make our particulars both accurate and reliable. However they are not guaranteed; nor do they form part of an offer or contract. If you require clarification on any points then please contact us, especially if you're traveling some distance to view. Please note that appliances and heating systems have not been tested and therefore no warranties can be given as to their good working order