

SNELLERS

ESTATE AGENTS



Herm Close, TW7

£1,400,000

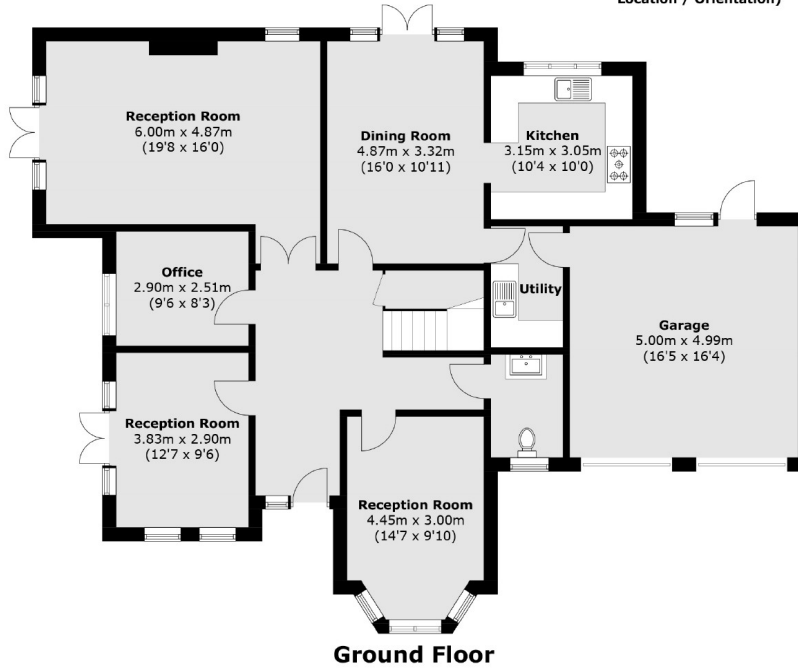
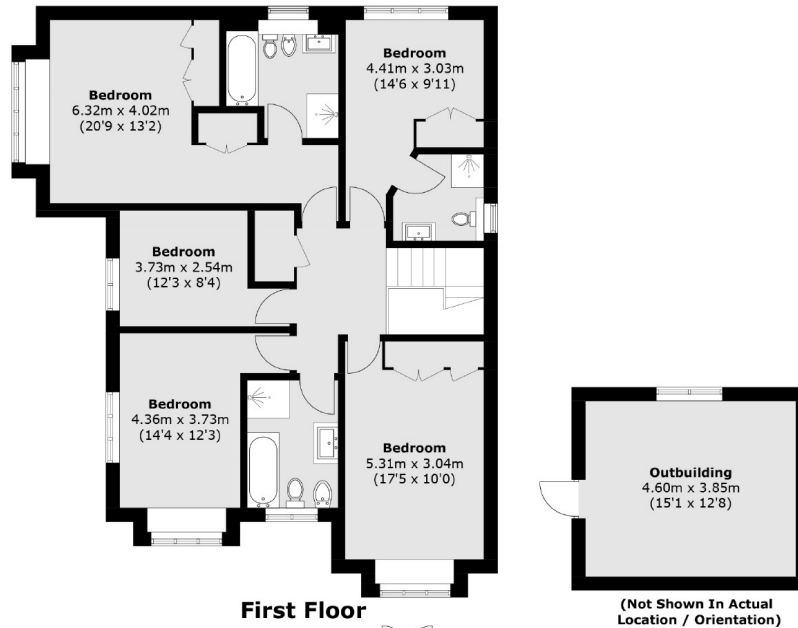
This stunning detached Mock Tudor-style property combines classic charm with contemporary comfort. The home features five generously sized, bright bedrooms, ideal for family living. Inside, you'll find beautifully designed living areas and a sleek, modern kitchen, while the outside boasts a well-kept private garden, perfect for relaxation. With the added benefit of a double garage, the property enjoys excellent transport connections and is within easy reach of Isleworth's vibrant high street, top-rated schools, and scenic green spaces.

Herm Close is a highly sought after peaceful cul-de-sac with Isleworth railway station and Osterley tube station nearby. You are also well situated for great schools and delightful green spaces.

- Detached • Five Bedrooms • Double Garage •
- Driveway • Private Road • Over 2,500 SqFt. •

SNELLERS

ESTATE AGENTS



Total area (approx.): 236.6 sq. m (2,546.7 sq. ft)
(Including Garage)
Outbuilding area: 17.8 sq. m (191.6 sq. ft)

Snellers St. Margarets Sales
36 Crown Road
St Margarets
TW1 3EH
020 8892 8008
stmargaretssales@snellers.co.uk

Energy Rating: D We aim to make our particulars both accurate and reliable. However they are not guaranteed; nor do they form part of an offer or contract. If you require clarification on any points then please contact us, especially if you're traveling some distance to view. Please note that appliances and heating systems have not been tested and therefore no warranties can be given as to their good working order