

# SNELLERS

ESTATE AGENTS

---



**Clevedon Road, TW1**

**£5,200 PCM**

This substantial four bedroom first floor riverside apartment has a large reception room overlooking the communal gardens, principle bedroom with ensuite shower room, three further double bedrooms, an eat-in kitchen and a stylish family bathroom.



This substantial four bedroom first floor riverside apartment has a large reception room overlooking the communal gardens, principle bedroom with ensuite shower room, three further double bedrooms, an eat-in kitchen and a stylish family bathroom.

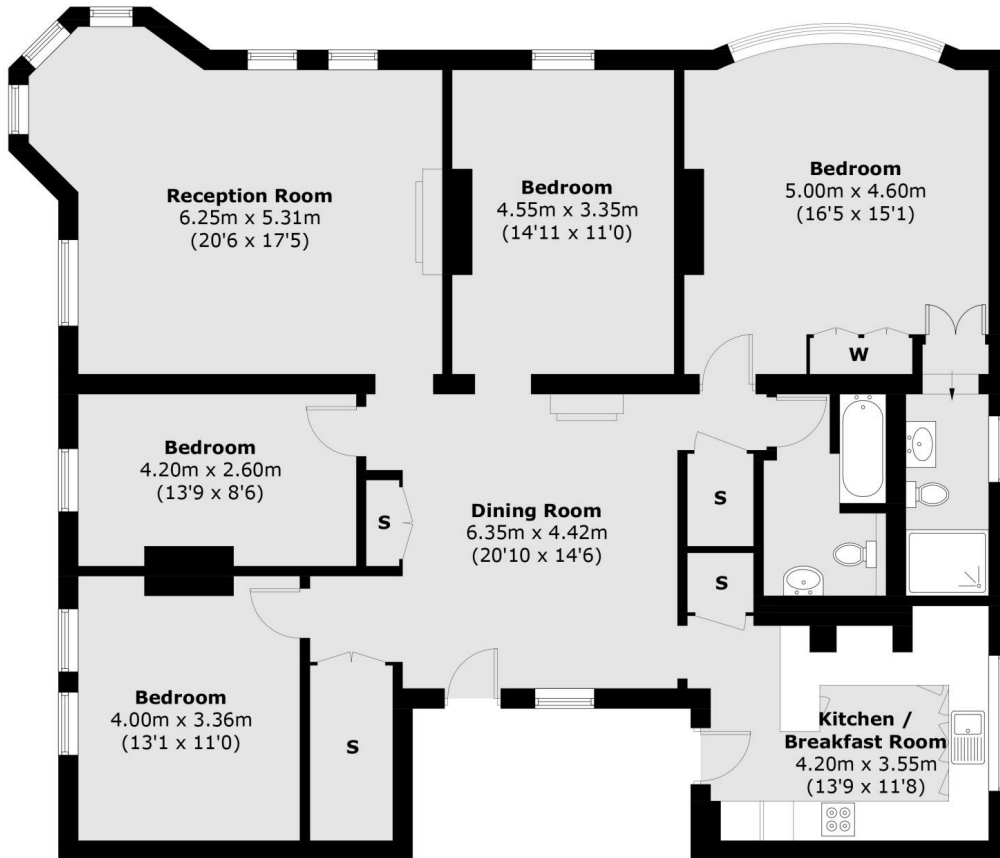
Located next to Richmond Bridge, Clevedon Road offers easy access to both Richmond town centre and St Margarets Village for numerous shops, cafes and transport links.

- Mansion Block • First Floor Flat • Communal Gardens •
- Four Bedrooms • Two Bathrooms • Amazing Location •



# SNELLERS

ESTATE AGENTS



## First Floor

Total area (approx.): 152.6 sq. m (1,642.5 sq. ft)

Snellers St. Margarets Lettings  
36 Crown Road  
St Margarets  
TW1 3EH  
020 8892 0700  
[stmargaretslettings@snellers.co.uk](mailto:stmargaretslettings@snellers.co.uk)

Energy Rating: D We aim to make our particulars both accurate and reliable. However they are not guaranteed; nor do they form part of an offer or contract. If you require clarification on any points then please contact us, especially if you're traveling some distance to view. Please note that appliances and heating systems have not been tested and therefore no warranties can be given as to their good working order