

# SNELLERS

ESTATE AGENTS



## Witham Road, TW7

£850,000

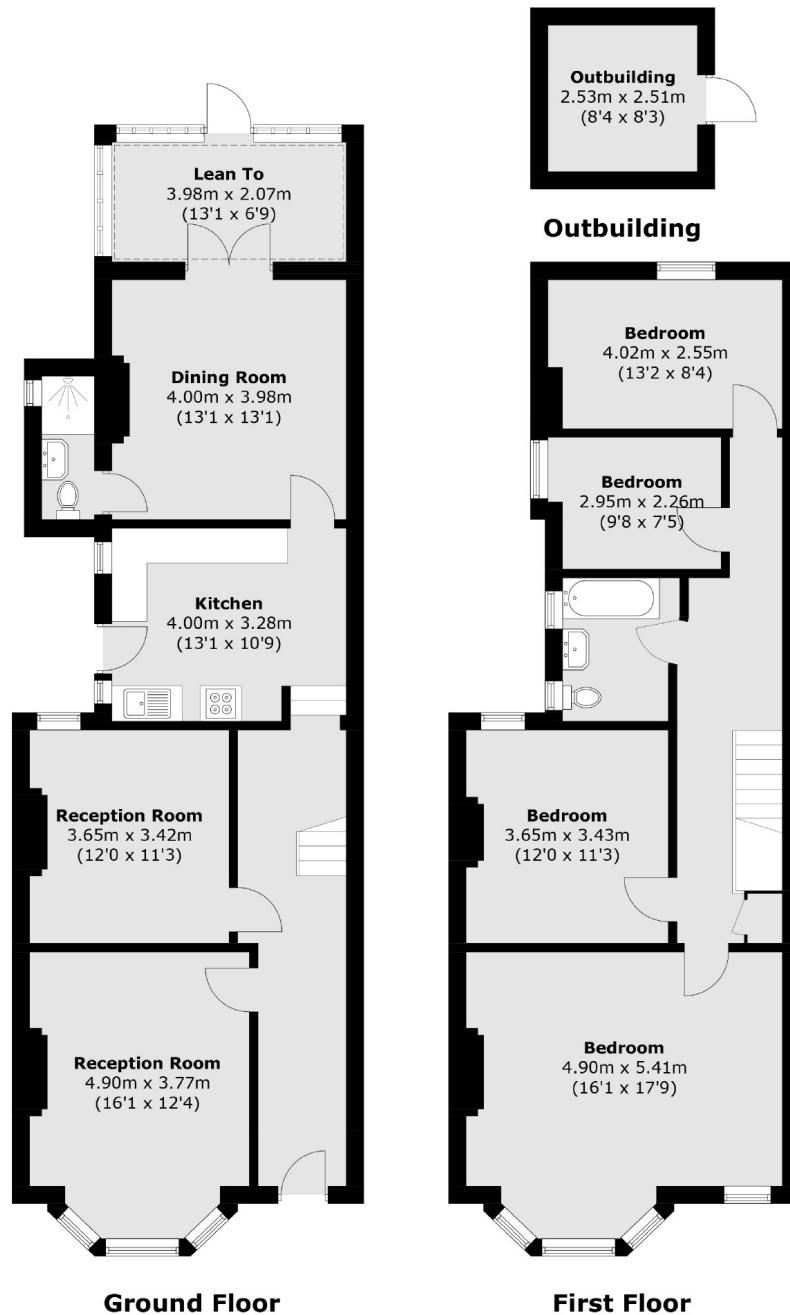
A well proportioned, four bedroom Victorian semi detached family home offered to the market with no onward chain located on this popular residential road in Isleworth.

Witham Road is well placed for easy access to Isleworth BR Mainline station, Osterley Tube & Hounslow East tube (Piccadilly Line). The shops and amenities of Isleworth are within easy walking distance and St Margaret's & Richmond town centres are also close by.

- Victorian • Semi Detached • Four Bedrooms •
- Private Garden • Potential to Extend • No Chain •

# SNELLERS

ESTATE AGENTS



Total area (approx.): 161.5 sq. m (1,738.3 sq. ft)  
Outbuilding : 6.5 sq. m (70.0 sq. ft)

Snellers St. Margarets Sales  
36 Crown Road  
St Margarets  
TW1 3EH  
020 8892 8008  
stmargaretssales@snellers.co.uk

Energy Rating: D We aim to make our particulars both accurate and reliable. However they are not guaranteed; nor do they form part of an offer or contract. If you require clarification on any points then please contact us, especially if you're traveling some distance to view. Please note that appliances and heating systems have not been tested and therefore no warranties can be given as to their good working order