

SNELLERS

ESTATE AGENTS



Napier Road, TW7

£789,950

This spacious three bedroom, two bathroom end of terrace Victorian house has been recently renovated with a brand new kitchen, ensuite bathroom and landscaped garden. The current owners have maintained the original period features including fireplaces and hardwood floors.



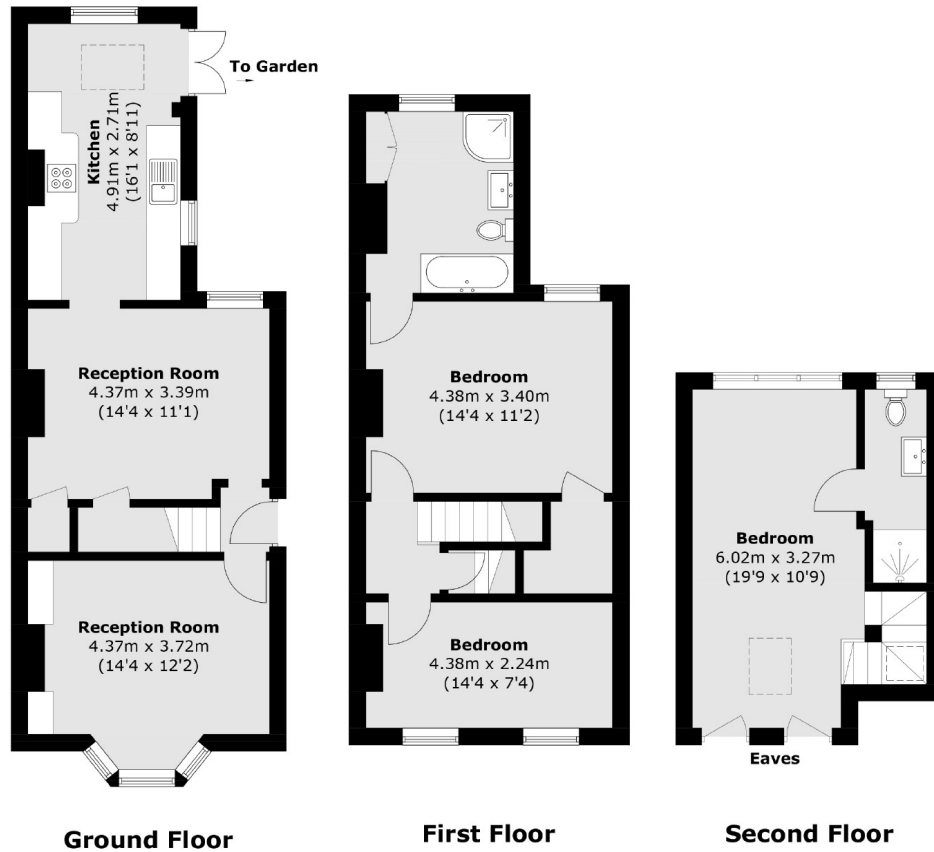
Napier Road is arguably the most desirable road in Old Isleworth. Within half a mile from the River Thames, its towpath walks into Richmond and close proximity to St. Margarets with access to excellent local schools nearby.

- End of Terrace • Period Features • Recently Renovated •
- Three Bedrooms • Two Bathrooms • Over 1,200 Sqft. •



SNELLERS

ESTATE AGENTS



Total area (approx.): 113.5 sq. m (1,222.7 sq. ft)
(Excluding Eaves)

Snellers St. Margarets Sales
36 Crown Road
St Margarets
TW1 3EH
020 8892 8008
stmargaretssales@snellers.co.uk

Energy Rating: E We aim to make our particulars both accurate and reliable. However they are not guaranteed; nor do they form part of an offer or contract. If you require clarification on any points then please contact us, especially if you're traveling some distance to view. Please note that appliances and heating systems have not been tested and therefore no warranties can be given as to their good working order