

SNELLERS

ESTATE AGENTS



Winchester Road, TW1

£1,100,000

A recently renovated and immaculately presented, three bedroom two bathroom end of terrace Victorian family home offered to the market with no onward chain and has the added bonus of a private parking space located in the heart of St Margarets Village.



A recently renovated and immaculately presented, three bedroom two bathroom end of terrace Victorian family home offered to the market with no onward chain and has the added bonus of a private parking space located in the heart of St Margarets Village.

The accommodation offers an entrance hallway, a large bay fronted reception room leading onto a wonderfully extended open plan kitchen with high quality integrated appliances and a dining area including a utility room and storage room. The private garden is accessed via bi-folding doors from the kitchen and also has a pedestrian gate to the rear leading to the private parking space.

On the first floor there are two double bedrooms, a contemporary family bathroom and a principal bedroom with a stylish en suite shower room.

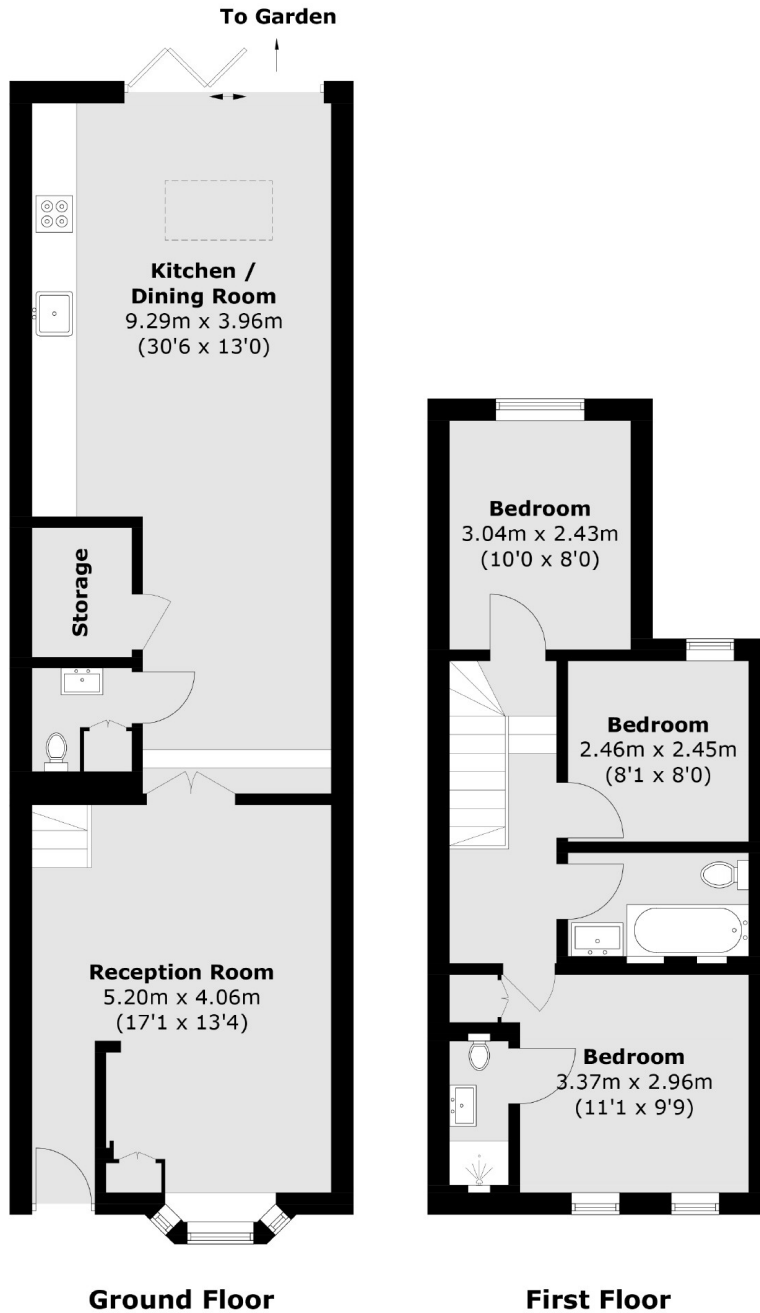
Winchester road is enviably positioned in the heart of St Margarets village, moments away from the high street, good local schools, amenities, Moor Mead Park and the mainline train station.

- End of Terrace • Victorian Family Home • Three Bedrooms •
- Immaculate Condition • Private Parking Space • No Chain •



SNELLERS

ESTATE AGENTS



Total area (approx.): 97.9 sq. m (1,053.7 sq. ft)

Snellers St. Margarets Sales
36 Crown Road
St Margarets
TW1 3EH
020 8892 8008
stmargaretssales@snellers.co.uk

Energy Rating: We aim to make our particulars both accurate and reliable. However they are not guaranteed; nor do they form part of an offer or contract. If you require clarification on any points then please contact us, especially if you're traveling some distance to view. Please note that appliances and heating systems have not been tested and therefore no warranties can be given as to their good working order