



Ridgeway Road, TW7

£1,200,000

A simply stunning and immaculately designed, end of terrace four bedroom two bathroom Edwardian family home including off-street parking located on this premier residential road in Isleworth.

Having undergone extensive renovation throughout whilst retaining the period features and character the accommodation offers a spacious entrance hallway, a superb bay fronted reception room, a downstairs W.C, a utility room and a wonderful open plan eat-in kitchen/dining area with bi-folding doors onto a lovely private garden.

On the first floor there are two generous double bedrooms with built-in wardrobes, a stylish four-piece family bathroom and a further bedroom. Into the loft can be found a principle bedroom with plenty of eaves storage space and an en suite shower room.



Having undergone extensive renovation throughout whilst retaining the period features and character the accommodation offers a spacious entrance hallway, a superb bay fronted reception room, a downstairs W.C, a utility room and a wonderful open plan eat-in kitchen/dining area with bi-folding doors onto a lovely private garden.

On the first floor there are two generous double bedrooms with built-in wardrobes, a stylish four-piece family bathroom and a further bedroom. Into the loft can be found a principle bedroom with plenty of eaves storage space and an en suite shower room.

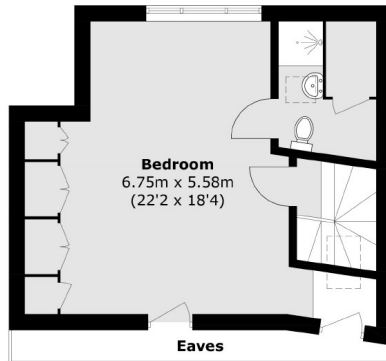
Ridgeway Road is a beautiful tree lined road and is a short walk to Isleworth train station, Osterley tube station and is within easy reach of excellent local schools.

- Edwardian Family Home • End of Terrace • Immaculate Condition •
- Four Bedrooms • Two Bathrooms • Off-Street Parking •

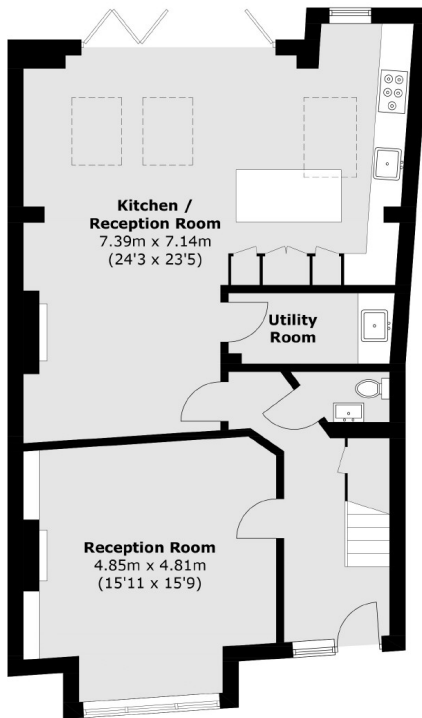


SNELLERS

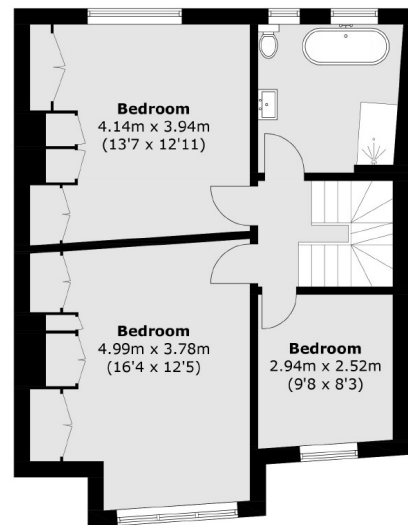
ESTATE AGENTS



Second Floor



Ground Floor



First Floor

Total area (approx.): 178.7 sq. m (1,923.5 sq. ft)
(Excluding Eaves)

Snellers St. Margarets Sales
36 Crown Road
St Margarets
TW1 3EH
020 8892 8008
stmargaretssales@snellers.co.uk

Energy Rating: We aim to make our particulars both accurate and reliable. However they are not guaranteed; nor do they form part of an offer or contract. If you require clarification on any points then please contact us, especially if you're traveling some distance to view. Please note that appliances and heating systems have not been tested and therefore no warranties can be given as to their good working order