

# SNELLERS

ESTATE AGENTS



## Newton Road, TW7

£585,000

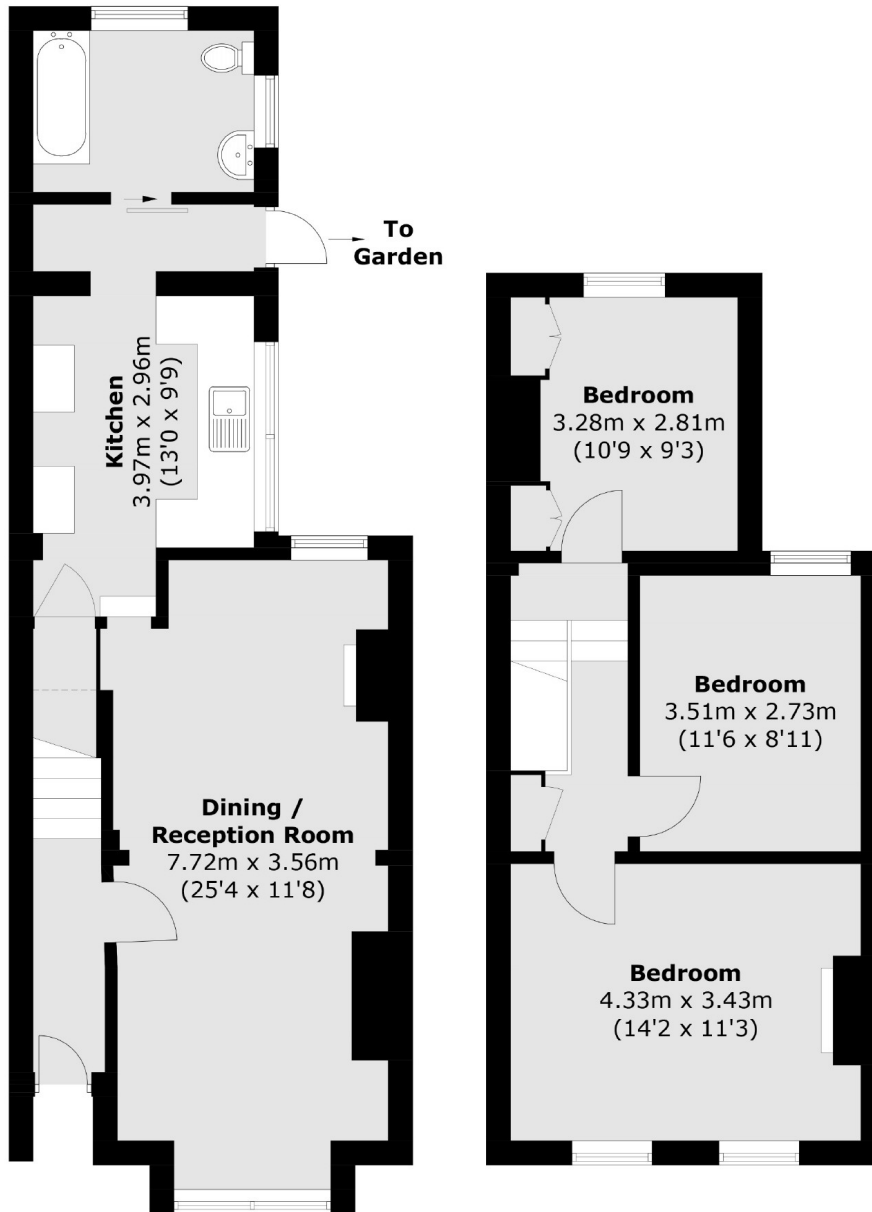
Brought to the market for the first time in 58 years and offered to the market with immediate vacant possession is this charming and characterful Victorian family home with potential to extend (STPP) and redevelop located on this highly sought after residential road in Isleworth.

Newton Road is one of Isleworth's most popular roads and is ideally located moments away from Isleworth mainline station with its frequent service into London Waterloo.

- Victorian Family Home • Three Double Bedrooms • Potential to Extend •
- Private Garden • Excellent Location • No Chain •

# SNELLERS

ESTATE AGENTS



**Ground Floor**

**First Floor**

Total area (approx.): 89.9 sq. m (967.6 sq. ft)

Snellers St. Margarets Sales  
36 Crown Road  
St Margarets  
TW1 3EH  
020 8892 8008  
stmargaretssales@snellers.co.uk

Energy Rating: We aim to make our particulars both accurate and reliable. However they are not guaranteed; nor do they form part of an offer or contract. If you require clarification on any points then please contact us, especially if you're traveling some distance to view. Please note that appliances and heating systems have not been tested and therefore no warranties can be given as to their good working order