

SNELLERS

ESTATE AGENTS



Haliburton Road, TW1

£680,000

An impressive and exciting opportunity to purchase this two bedroom extended ground floor Victorian maisonette with an enviable river-facing garden measuring over 100 ft located on this highly desirable residential road in St Margarets.



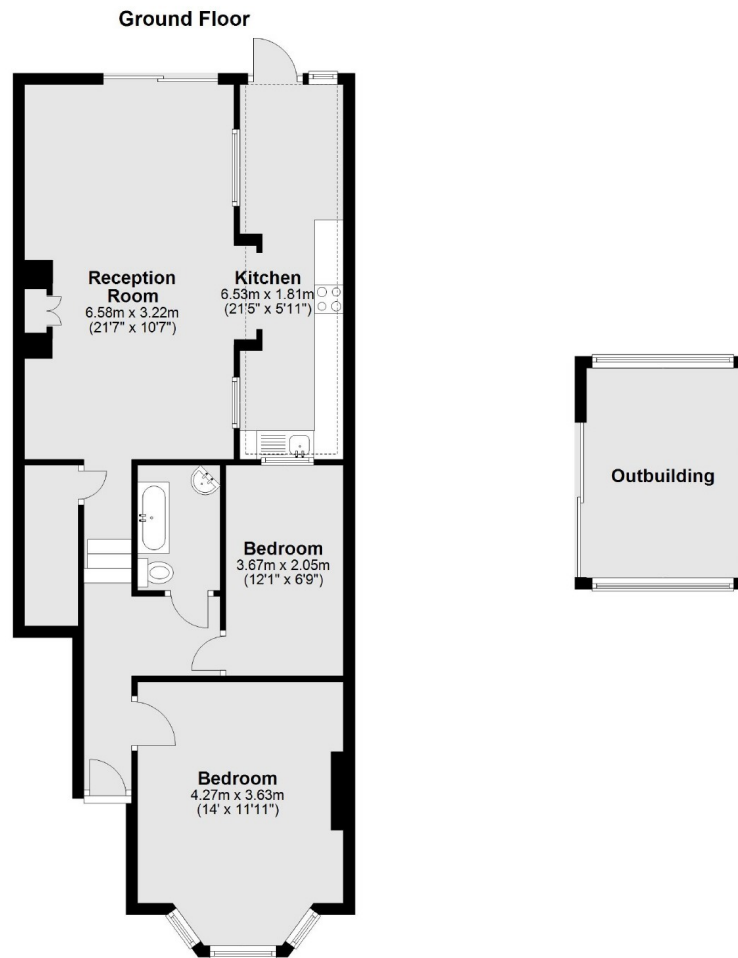
The accommodation offers an entrance hallway, a generous bay fronted double bedroom, a family bathroom, a second double bedroom, a large open plan reception room and extended kitchen spanning the width of the property with sliding doors onto a substantial river-facing private garden.

Further benefits include an outbuilding.

Haliburton Road is a quiet and desirable residential road located in St Margarets with its mainline train service into London Waterloo, and within the catchment of St Stephens Primary School.

- Rarely Available • Ground Floor Maisonette • Two Bedrooms •
- Extended Kitchen • River-Facing Private Garden • Share of Freehold •





Main area: Approx. 73.8 sq. metres (794.3 sq. feet)
Plus outbuildings, approx. 9.8 sq. metres (105.0 sq. feet)

Snellers St. Margarets Sales
36 Crown Road
St Margarets
TW1 3EH
020 8892 8008
stmargaretssales@snellers.co.uk

Energy Rating: We aim to make our particulars both accurate and reliable. However they are not guaranteed; nor do they form part of an offer or contract. If you require clarification on any points then please contact us, especially if you're traveling some distance to view. Please note that appliances and heating systems have not been tested and therefore no warranties can be given as to their good working order