

# SNELLERS

ESTATE AGENTS



## Woodlands Grove, TW7

£999,950

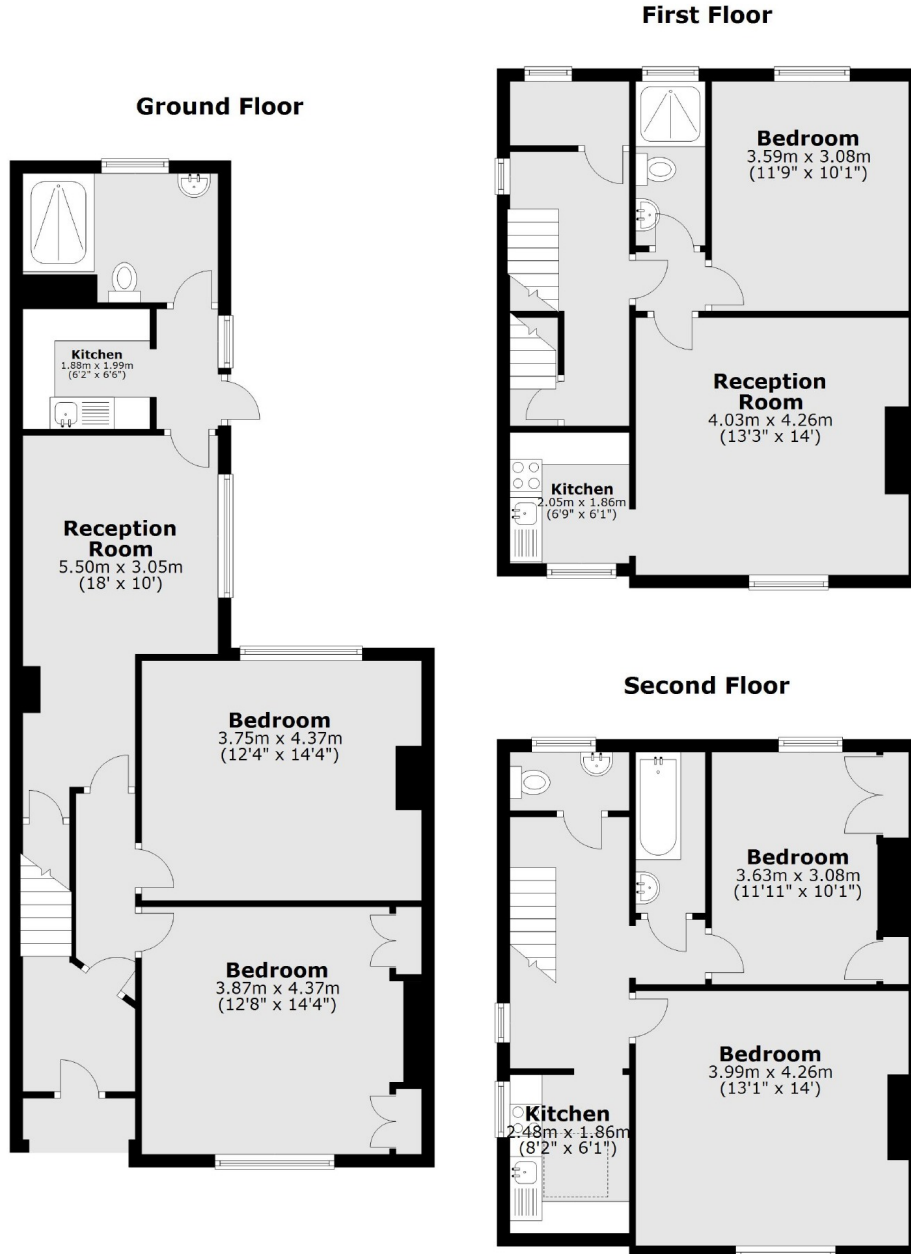
A unique opportunity to acquire this detached Victorian four/ five bedroom family home currently configured as three flats with huge potential to re-model and re-design throughout. It comes with the added bonus of no onward chain and is situated on this highly desirable residential road in Isleworth.

Woodlands Grove is situated just behind St John's Road, providing easy access to Isleworth BR Mainline Station, local amenities and excellent local schools. St Margaret's and Richmond are also within easy reach.

- Unique Opportunity • Detached • Potential to Re-Develop •
- Large Private Garden • Off-Street Parking • No Chain •

# SNELLERS

ESTATE AGENTS



Total area: approx. 166.3 sq. metres (1790.1 sq. feet)

Snellers St. Margarets Sales  
36 Crown Road  
St Margarets  
TW1 3EH  
020 8892 8008  
stmargaretssales@snellers.co.uk

Energy Rating: D We aim to make our particulars both accurate and reliable. However they are not guaranteed; nor do they form part of an offer or contract. If you require clarification on any points then please contact us, especially if you're traveling some distance to view. Please note that appliances and heating systems have not been tested and therefore no warranties can be given as to their good working order