



## Wood Lane, TW7

£265,000

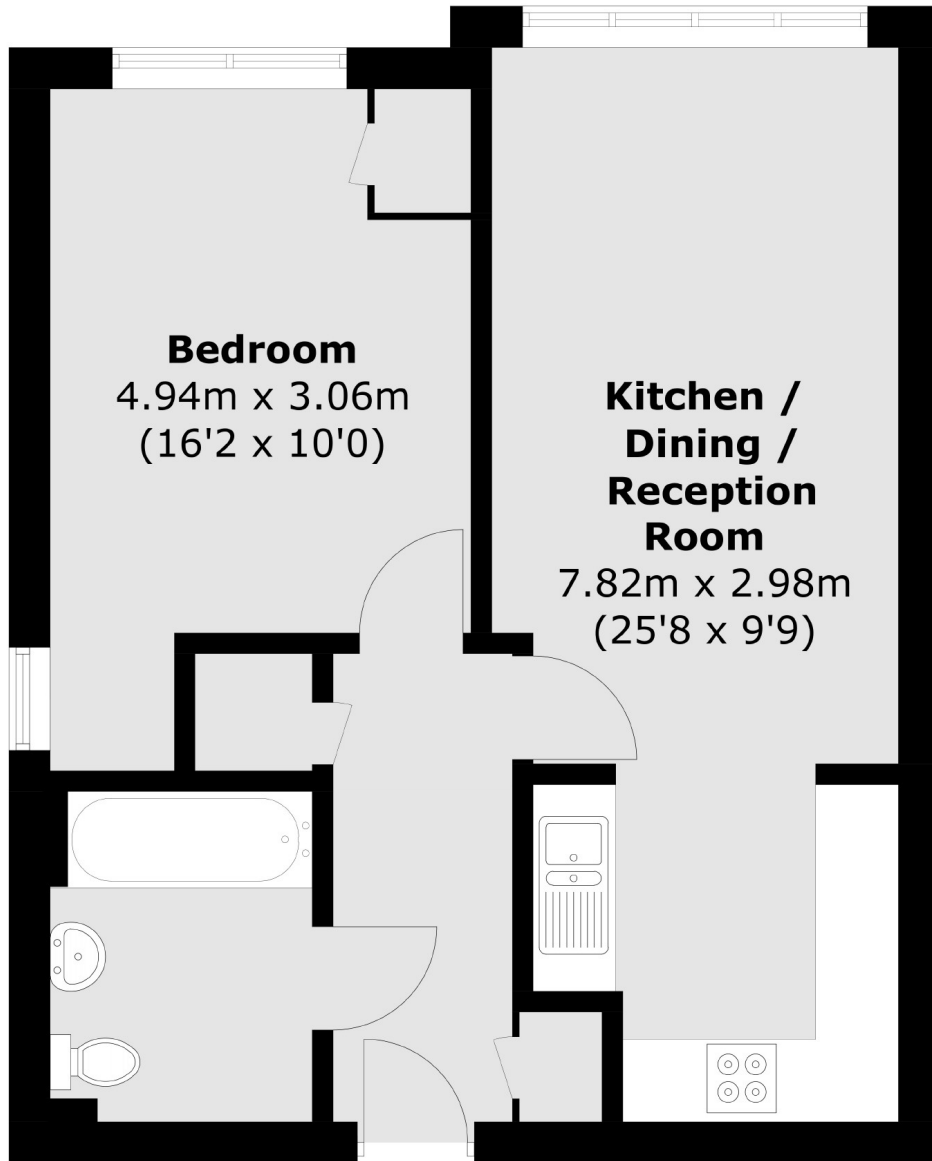
Situated within an exclusive modern development is this immaculately presented, large one double bedroom top floor apartment including allocated parking and lift access located on this popular residential road in Isleworth.

Wood Lane is located close to good local schools and Isleworth Village. Well served by good transport links and within walking distance of Isleworth station & Osterley tube station.

- Modern Development • One Double Bedroom • Great Condition •
- Allocated Parking • Excellent Location • Ideal for First Time Buyers or Investors •

# SNELLERS

ESTATE AGENTS



Total area (approx.): 47.1 sq. m (506.9 sq. ft)

Snellers St. Margarets Sales  
36 Crown Road  
St Margarets  
TW1 3EH  
020 8892 8008  
stmargaretssales@snellers.co.uk

Energy Rating: We aim to make our particulars both accurate and reliable. However they are not guaranteed; nor do they form part of an offer or contract. If you require clarification on any points then please contact us, especially if you're traveling some distance to view. Please note that appliances and heating systems have not been tested and therefore no warranties can be given as to their good working order