

# SNELLERS

ESTATE AGENTS



## Worton Road, TW7

£510,000

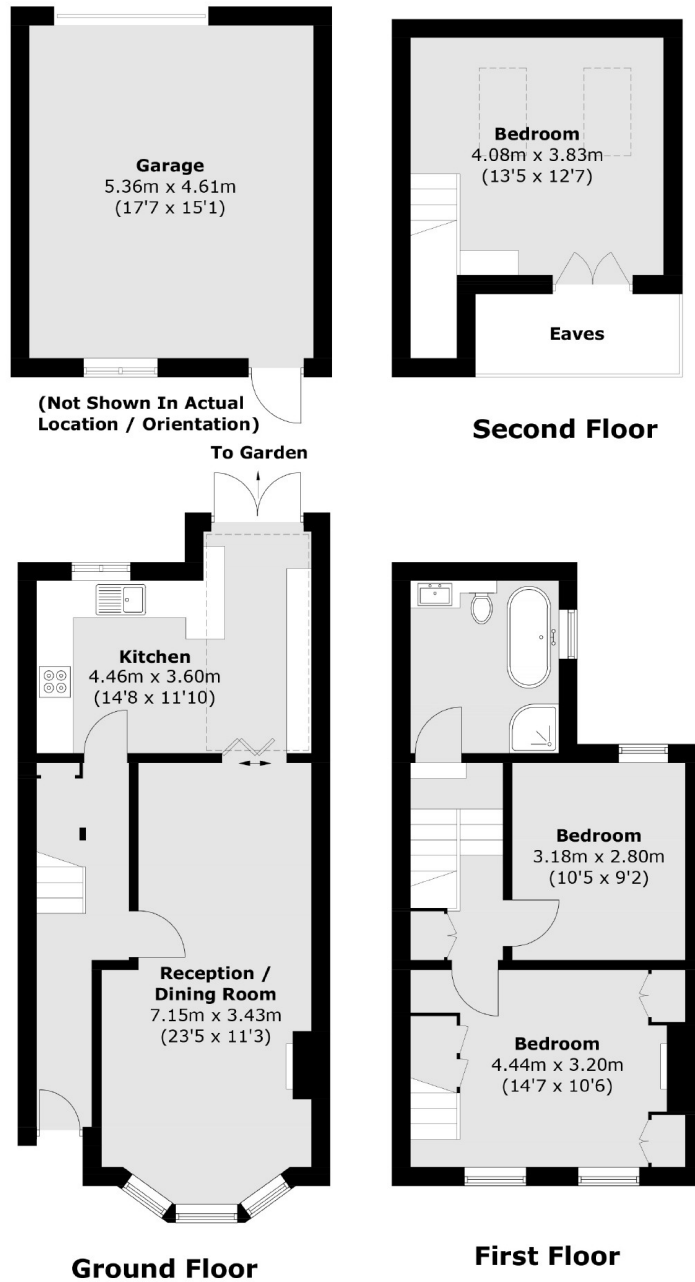
A beautifully presented, three bedroom Victorian family home with the added bonus of a garage and no onward chain set on this popular residential road in Isleworth.

Worton Road is a popular residential location, moments away from transport links, local amenities and within easy reach of excellent schools nearby.

- Victorian Family Home • Three Bedrooms • Excellent Condition •
- Large Private Garden • Garage • No Chain •

# SNELLERS

ESTATE AGENTS



Total area (approx.): 97.6 sq. m (1,050.5 sq. ft)  
(Excluding Eaves)  
Garage: 25.0 sq. m (269.1 sq. ft)

Snellers St. Margarets Sales  
36 Crown Road  
St Margarets  
TW1 3EH  
020 8892 8008  
stmargaretssales@snellers.co.uk

Energy Rating: We aim to make our particulars both accurate and reliable. However they are not guaranteed; nor do they form part of an offer or contract. If you require clarification on any points then please contact us, especially if you're traveling some distance to view. Please note that appliances and heating systems have not been tested and therefore no warranties can be given as to their good working order