

SNELLERS

ESTATE AGENTS



Cambridge Park, TW1

£635,000

Enviably positioned within this sought after private gated riverside development is this well presented two double bedroom first floor apartment with lift access, unallocated parking situated within this Art Deco mansion block.

Further benefits include the share of freehold, a private tennis court and approximately seven acres of landscaped communal gardens leading down to the River Thames.



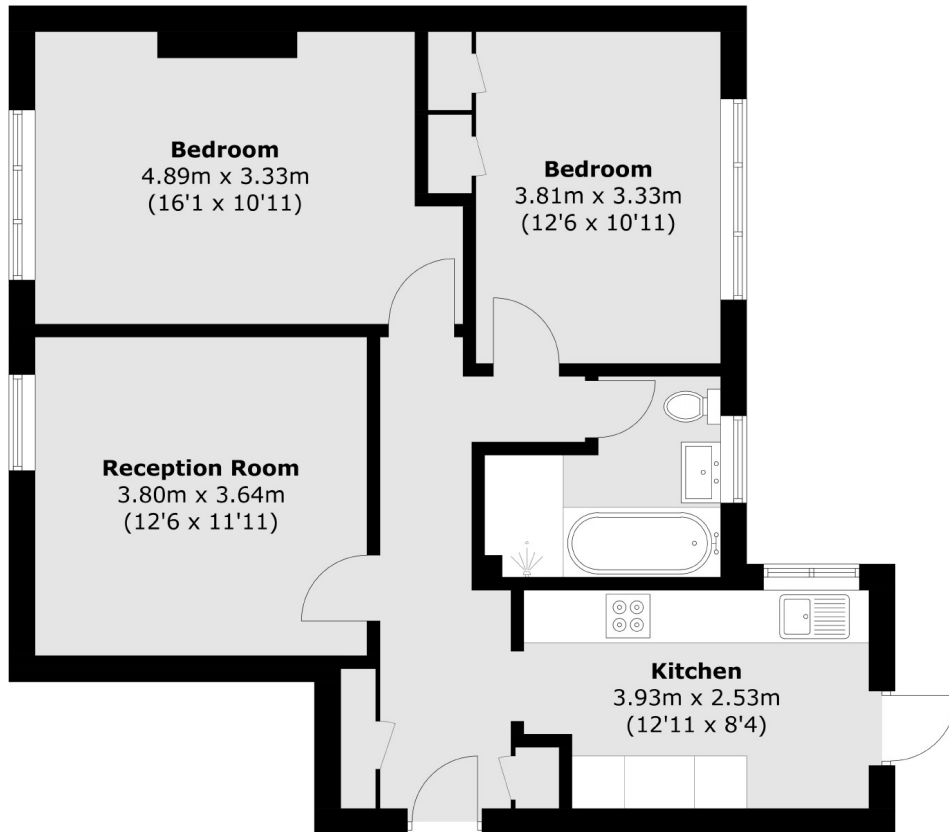
Meadowside is a private gated development set by the River Thames within quarter of mile of Richmond town centre and mainline station with fast links into London Waterloo.

- First Floor • Two Double Bedrooms • Unallocated Parking •
- Share of Freehold with a 980 year lease • Lift Access • Gated Riverside Development •



SNELLERS

ESTATE AGENTS



Total area (approx.): 68.2 sq. m (734.1 sq. ft)

Snellers St. Margarets Sales
36 Crown Road
St Margarets
TW1 3EH
020 8892 8008
stmargaretssales@snellers.co.uk

Energy Rating: We aim to make our particulars both accurate and reliable. However they are not guaranteed; nor do they form part of an offer or contract. If you require clarification on any points then please contact us, especially if you're traveling some distance to view. Please note that appliances and heating systems have not been tested and therefore no warranties can be given as to their good working order