



Westmorland Close, TW1

£650,000

An immaculately presented, two bedroom split level maisonette with a private balcony set within this quiet cul-de-sac enviably positioned in the heart of St Margarets Village.



Arranged over two floors the accommodation offers a welcoming entrance hallway with plenty of storage space, a large reception room with a private balcony, a high quality kitchen and dining area.

On the top floor there is the master bedroom, a generous second double bedroom with built-in storage space and a newly refurbished four-piece family bathroom.

The property also benefits from having a long lease, downstairs bike storage and access to full floor loft space.

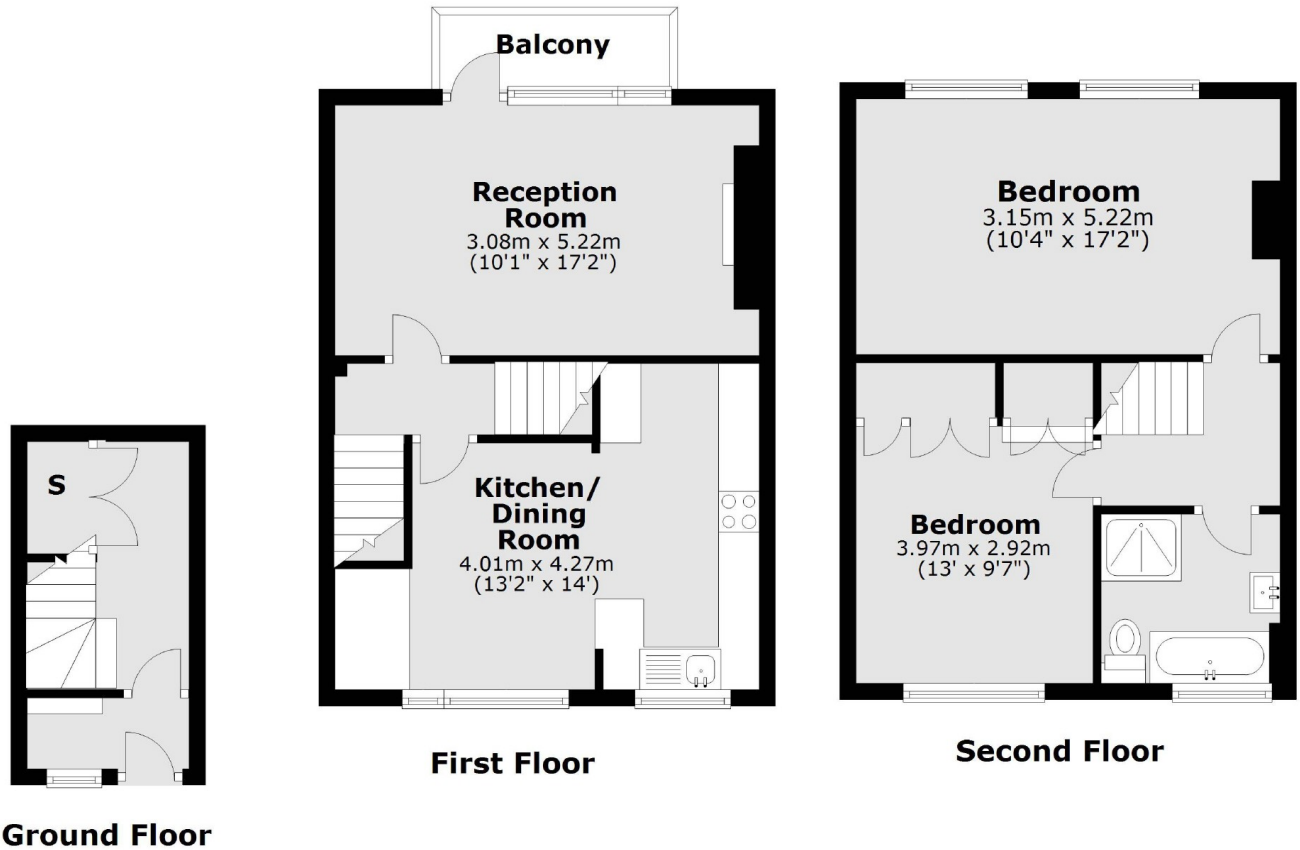
Westmorland Close is set within this quiet cul-de-sac, located moments away from St Margarets High street, amenities, mainline train station and is close proximity to Richmond and Twickenham.

- Split Level Maisonette • Two Bedrooms • Excellent Condition •
- Private Balcony • Great Location • Long Lease •



SNELLERS

ESTATE AGENTS



Total area: approx. 83.1 sq. metres (894.4 sq. feet)

Snellers St. Margarets Sales
36 Crown Road
St Margarets
TW1 3EH
020 8892 8008
stmargaretssales@snellers.co.uk

Energy Rating: We aim to make our particulars both accurate and reliable. However they are not guaranteed; nor do they form part of an offer or contract. If you require clarification on any points then please contact us, especially if you're traveling some distance to view. Please note that appliances and heating systems have not been tested and therefore no warranties can be given as to their good working order