

# SNELLERS

ESTATE AGENTS



**Borough Road, TW7**

**£2,250 PCM**

Elegant throughout, this large two bedroom flat has a spacious open-plan reception with lounge, dining area and a modern kitchen, a second double bedroom, bathroom suite and a master bedroom with dressing room and an ensuite. Further benefits include allocated parking and direct access to communal gardens.



Elegant throughout, this large two bedroom flat has a spacious open-plan reception with lounge, dining area and a modern kitchen, a second double bedroom, bathroom suite and a master bedroom with dressing room and an ensuite. Further benefits include allocated parking and direct access to communal gardens.

Lancaster House is a fantastic location offering easy access to the amenities of Isleworth including the overground station to London Waterloo, Osterley underground station and the A4.

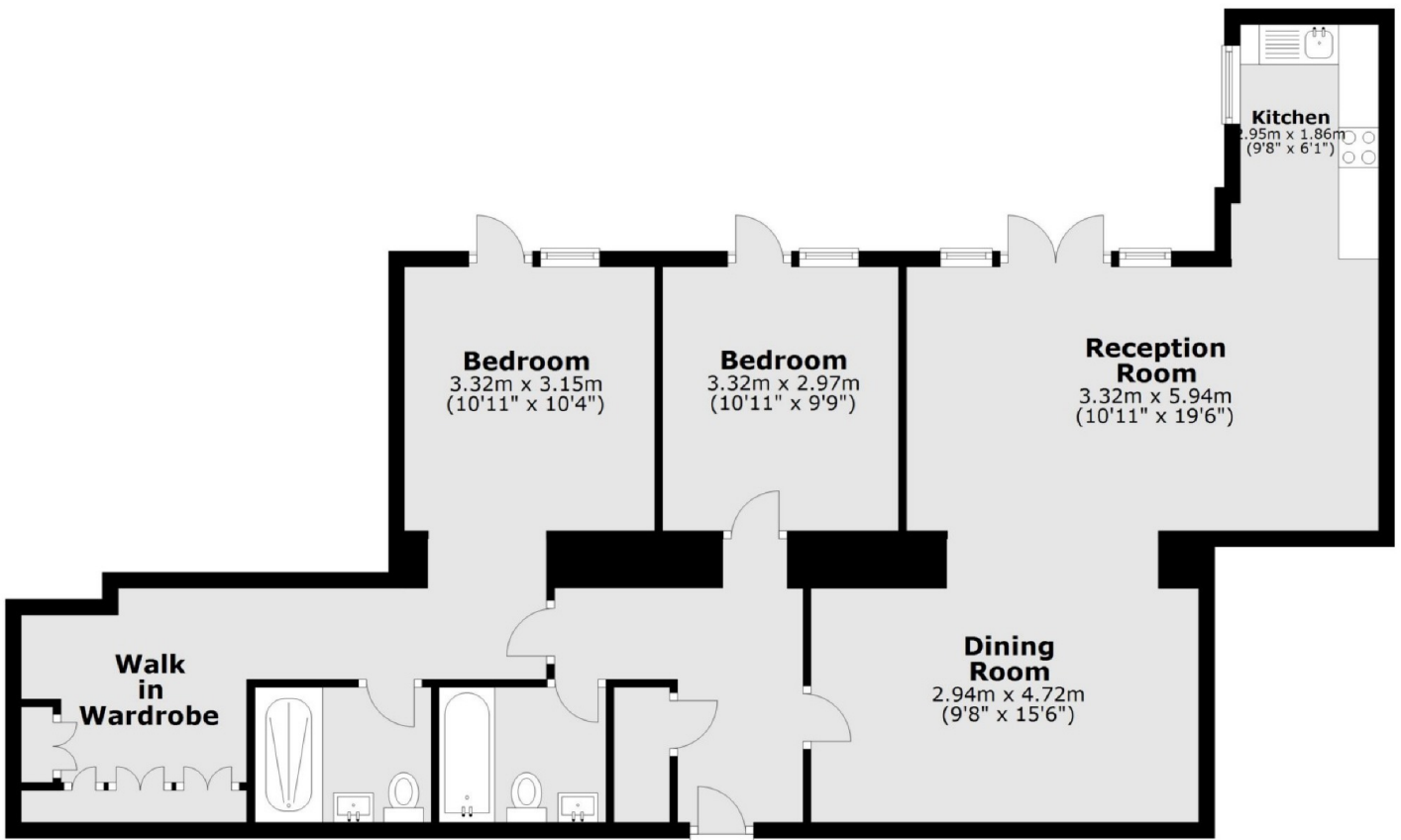
- Two Bedroom • Two Bathroom • Communal Garden •
- Allocated Parking • Gated Development • Recently Refurbished •



# SNELLERS

ESTATE AGENTS

## Ground Floor



Total area: approx. 96.6 sq. metres (1039.3 sq. feet)

Snellers St. Margarets Lettings  
36 Crown Road  
St Margarets  
TW1 3EH  
020 8892 0700  
[stmargaretslettings@snellers.co.uk](mailto:stmargaretslettings@snellers.co.uk)

Energy Rating: We aim to make our particulars both accurate and reliable. However they are not guaranteed; nor do they form part of an offer or contract. If you require clarification on any points then please contact us, especially if you're traveling some distance to view. Please note that appliances and heating systems have not been tested and therefore no warranties can be given as to their good working order