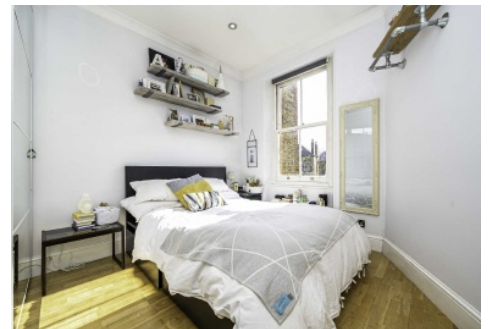


SNELLERS

ESTATE AGENTS



St. Margarets Road, TW1

£475,000

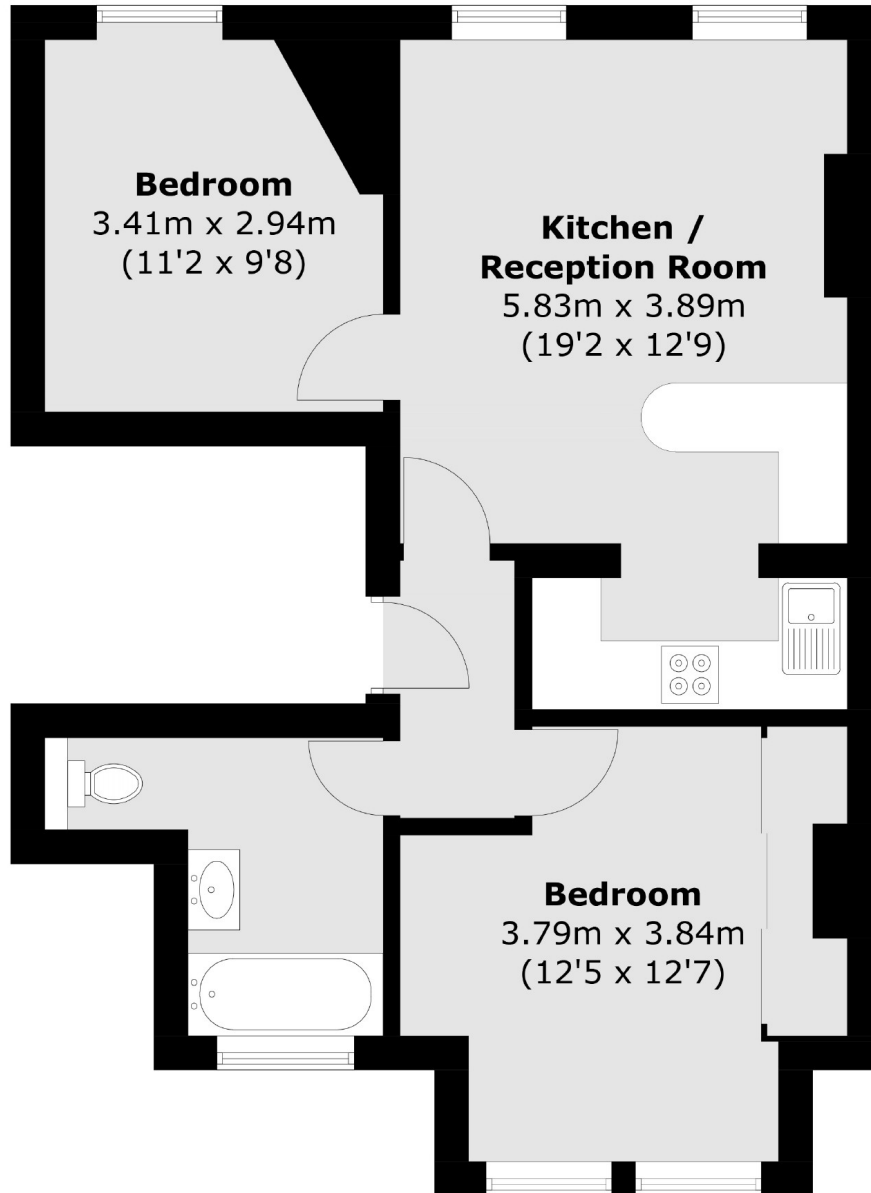
A beautifully presented, two double bedroom first floor Edwardian conversion apartment including a newly refurbished kitchen and bathroom whilst also offering a share of the freehold and enviably located moments away from Richmond town centre and St Margarets village.

St. Margarets Road is ideally situated for excellent bus links outside the door to Twickenham, Richmond and leading onwards by train and underground to central London. It is just a short walk to St Margarets station.

- Edwardian Conversion • Two Double Bedrooms • Good Condition •
- Share of Freehold • Excellent Location • Ideal for First Time Buyers or Investors •

SNELLERS

ESTATE AGENTS



Total area (approx.): 53.1 sq. m (571.6 sq. ft)

Snellers St. Margarets Sales
36 Crown Road
St Margarets
TW1 3EH
020 8892 8008
stmargaretssales@snellers.co.uk

Energy Rating: We aim to make our particulars both accurate and reliable. However they are not guaranteed; nor do they form part of an offer or contract. If you require clarification on any points then please contact us, especially if you're traveling some distance to view. Please note that appliances and heating systems have not been tested and therefore no warranties can be given as to their good working order