

SNELLERS

ESTATE AGENTS



Teesdale Gardens, TW7

£760,000

****OFFERS IN EXCESS OF**** A beautifully presented and recently refurbished, five bedroom three bathroom end of terrace family home with a South-facing private garden located on this popular residential road in Isleworth.



Arranged over three floors the accommodation offers a welcoming entrance hallway, a double through bay fronted reception room, a downstairs shower room, a bedroom and a contemporary kitchen with double doors onto a large South-facing garden including a garage to the rear.

On the first floor there are two generous double bedrooms, a family bathroom and a further bedroom. Into the loft can be found a master bedroom and an en suite shower room.

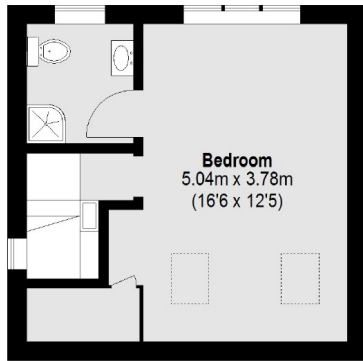
Teesdale Gardens is situated off London Road, within a short walking distance to Syon Lane BR mainline station & the amenities of Syon Park, good local schools. St Margaret's, Richmond and Twickenham are also within easy reach.

- End of Terrace • Five Bedrooms • Three Bathrooms •
- Off-Street Parking • Garage • South-Facing Garden •

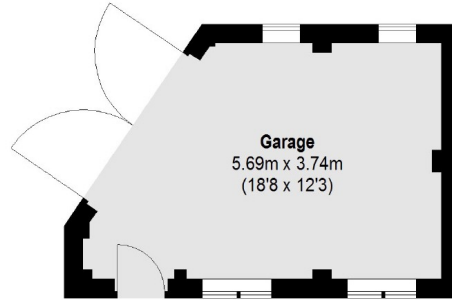


SNELLERS

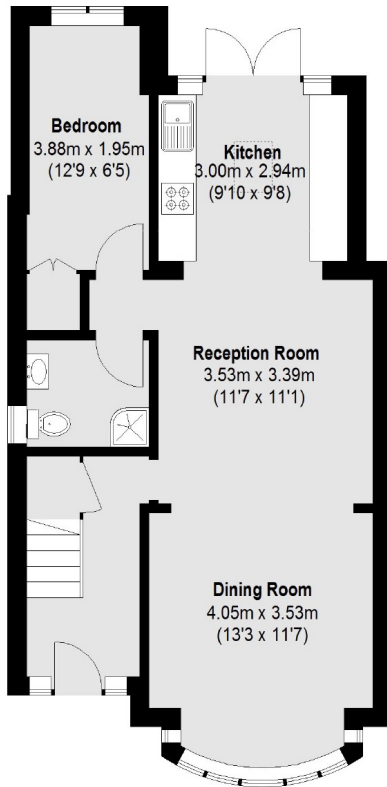
ESTATE AGENTS



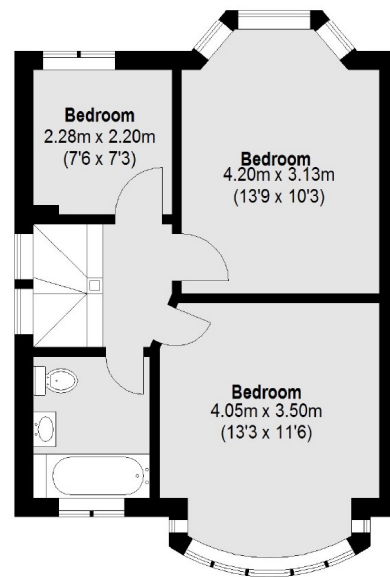
Second Floor



(Not Shown In Actual
Location / Orientation)



Ground Floor



First Floor

Total area (approx.): 122.63 sq. m (1320 Sq. ft)
Garage 19.05 sq. m (205 Sq. ft)

Snellers St. Margarets Sales
36 Crown Road
St Margarets
TW1 3EH
020 8892 8008
stmargaretssales@snellers.co.uk

Energy Rating: We aim to make our particulars both accurate and reliable. However they are not guaranteed; nor do they form part of an offer or contract. If you require clarification on any points then please contact us, especially if you're traveling some distance to view. Please note that appliances and heating systems have not been tested and therefore no warranties can be given as to their good working order