

SNELLERS

ESTATE AGENTS



St. Margarets Road, TW1

£440,000

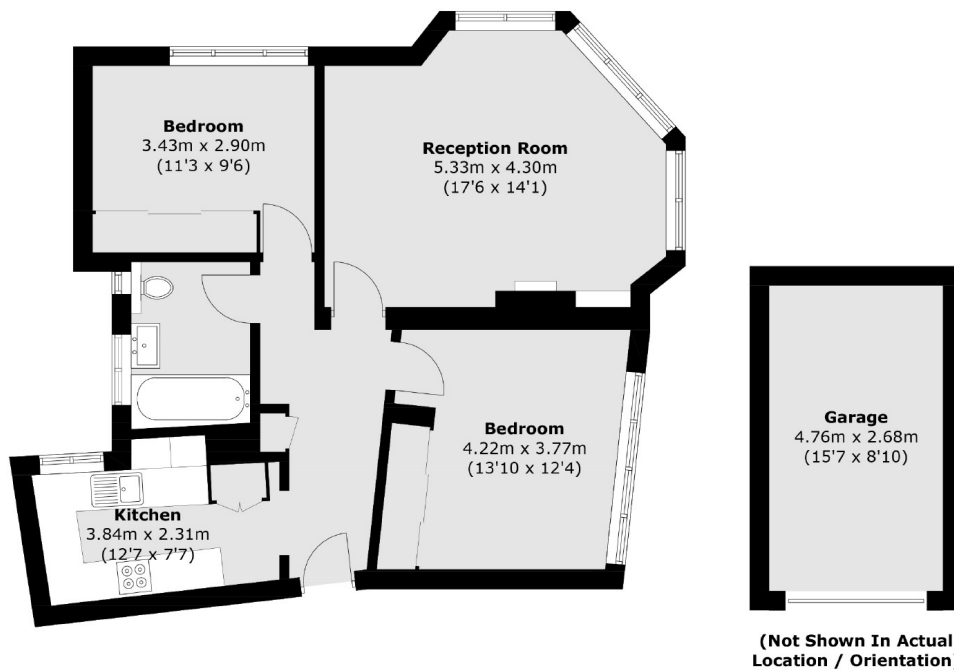
A well presented, larger than average second floor two bedroom apartment with fitted wardrobes and the rare added bonus of a garage and off-street parking set within this Art Deco building in the heart of St Margarets Village.

The Grove is a centrally located Art Deco building moments away from St Margarets Village, mainline train station and close proximity to Richmond and Twickenham.

- Second Floor • Two Double Bedrooms • Larger Than Average •
- Great Condition • Garage & Off-Street Parking • Communal Garden •

SNELLERS

ESTATE AGENTS



Total area (approx.): 67.7 sq. m (728.7 sq. ft)
Garage: 12.8 sq. m (137.8 sq. ft)

Snellers St. Margarets Sales
36 Crown Road
St Margarets
TW1 3EH
020 8892 8008
stmargaretssales@snellers.co.uk

Energy Rating: We aim to make our particulars both accurate and reliable. However they are not guaranteed; nor do they form part of an offer or contract. If you require clarification on any points then please contact us, especially if you're traveling some distance to view. Please note that appliances and heating systems have not been tested and therefore no warranties can be given as to their good working order