

SNELLERS

ESTATE AGENTS



St. Stephens Gardens, TW1

£750,000

****OFFERS IN EXCESS OF**** Rarely available and set within this impressive Edwardian building is this two bedroom ground floor period conversion apartment renovated to the highest standard throughout with direct access to a South-West facing shared garden located on one of St Margarets premier roads.



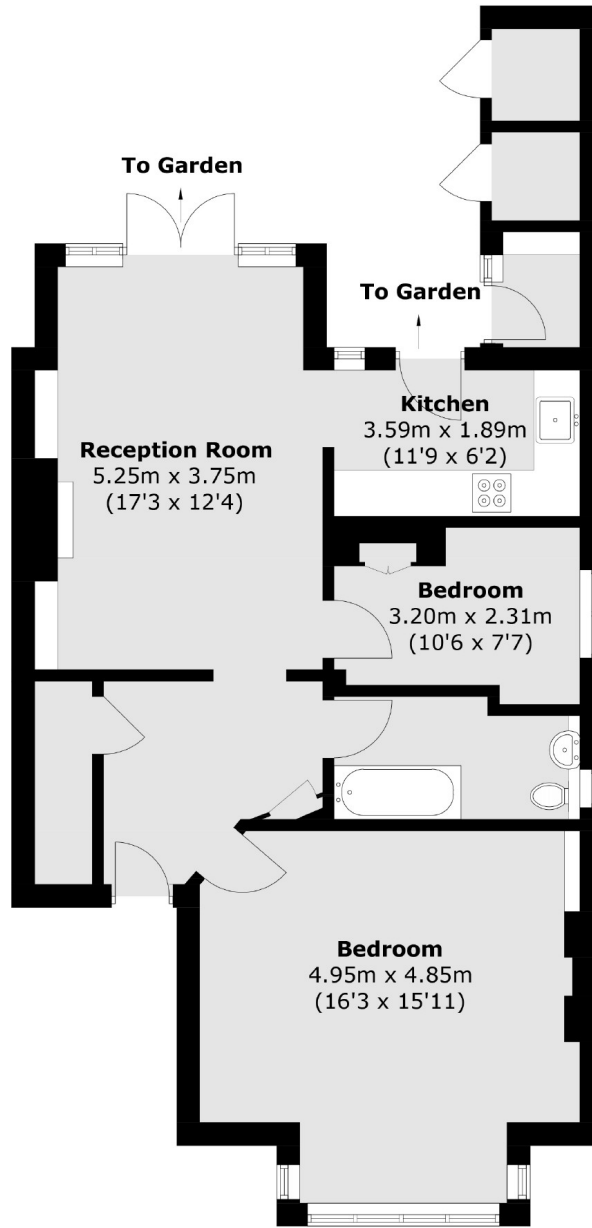
St Stephens Gardens is arguably one of the finest residential roads, enviably located in St Margarets village and is moments away from the high street, mainline station and picturesque Marble Hill Park.

- Edwardian • Ground Floor • Two Bedrooms •
- Immaculate Condition • Direct Access to Garden • Excellent Location •



SNELLERS

ESTATE AGENTS



Total area (approx.): 70.5 sq. m (758.9 sq. ft)
Storages : 4.3 sq. m (46.3 sq. ft)

Snellers St. Margarets Sales
36 Crown Road
St Margarets
TW1 3EH
020 8892 8008
stmargaretssales@snellers.co.uk

Energy Rating: D We aim to make our particulars both accurate and reliable. However they are not guaranteed; nor do they form part of an offer or contract. If you require clarification on any points then please contact us, especially if you're traveling some distance to view. Please note that appliances and heating systems have not been tested and therefore no warranties can be given as to their good working order