

SNELLERS

ESTATE AGENTS



Linkfield Road, TW7

£600,000

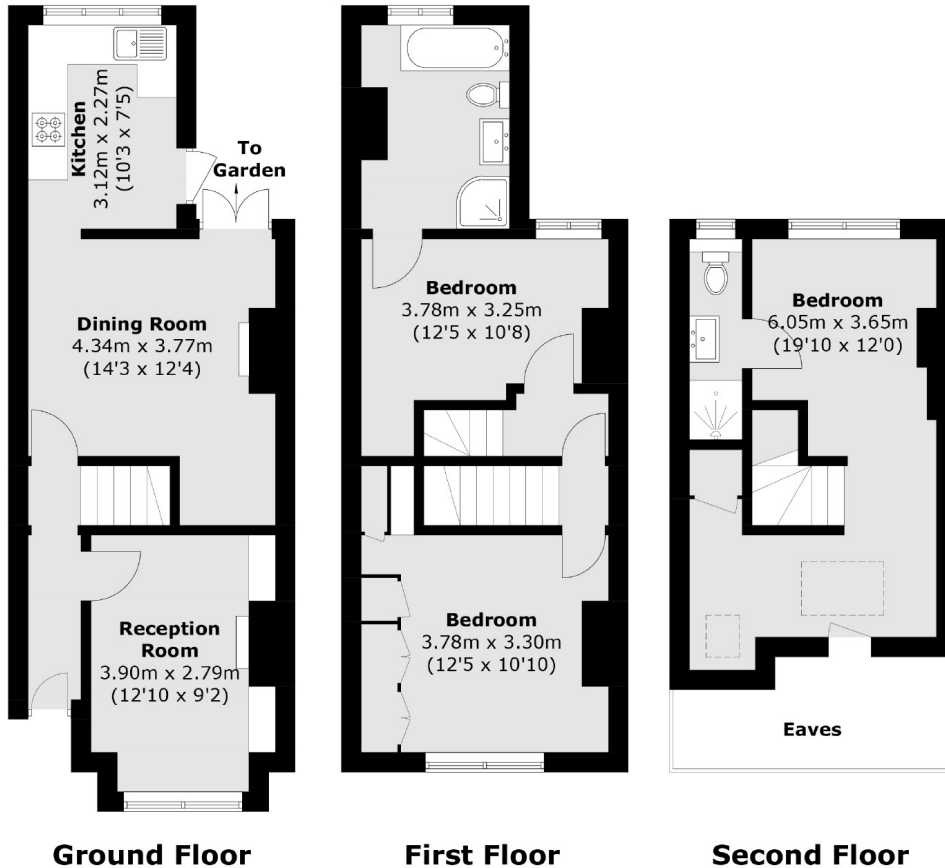
****OFFERS IN EXCESS OF**** A charming and attractive, three double bedroom, two bathroom Victorian family home with potential to extend located on this highly sought after residential road in Isleworth.

Linkfield Road is one of Isleworth's most popular roads and is ideally located moments away from Isleworth mainline station with its frequent service into London Waterloo.

- Victorian Family Home • Three Bedrooms • Two Bathrooms •
- Potential to Extend • Private Garden • Excellent Location •

SNELLERS

ESTATE AGENTS



Total area (approx.): 97.2 sq. m (1,046.2 sq. ft)
(Excluding Eaves)

Snellers St. Margarets Sales
36 Crown Road
St Margarets
TW1 3EH
020 8892 8008
stmargaretssales@snellers.co.uk

Energy Rating: We aim to make our particulars both accurate and reliable. However they are not guaranteed; nor do they form part of an offer or contract. If you require clarification on any points then please contact us, especially if you're traveling some distance to view. Please note that appliances and heating systems have not been tested and therefore no warranties can be given as to their good working order