

# SNELLERS

ESTATE AGENTS



## Borough Road, TW7

£435,000

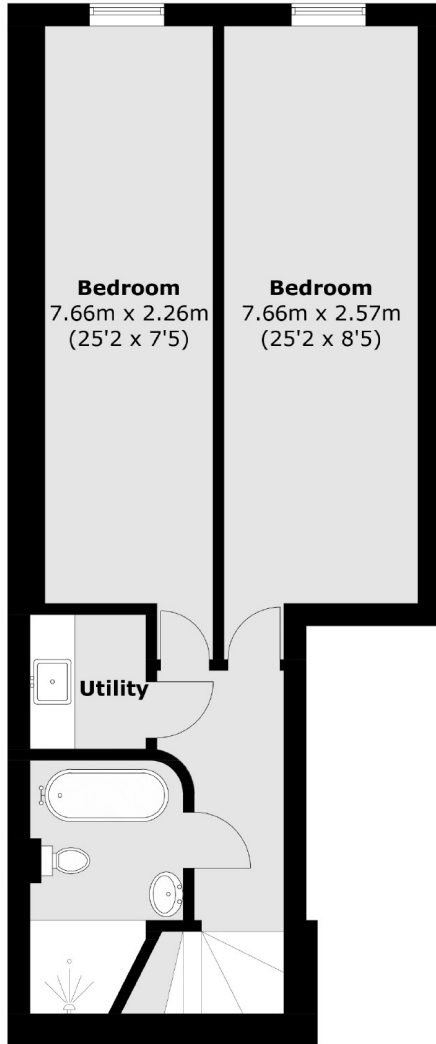
**\*\*OFFERS IN EXCESS OF\*\*** Set within this stunning grade II listed building is this beautifully presented, two bedroom two bathroom split level apartment arranged over three floors and offering in excess of 1100 sq.ft of living space located on this premier residential road in the heart of Isleworth.

Borough Road is a beautiful tree lined road and is a short walk to Isleworth train station, Osterley tube station and is within easy reach of excellent local schools.

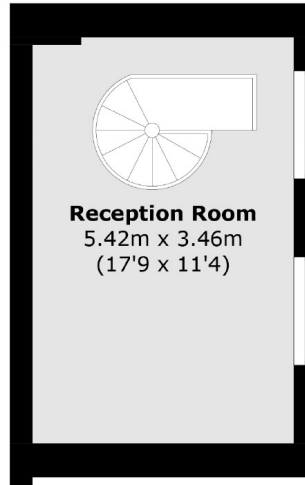
- Over 1100 sq.ft • Two Double Bedrooms • Two Bathrooms •
- Allocated Parking • Gated Development • No Chain •

# SNELLERS

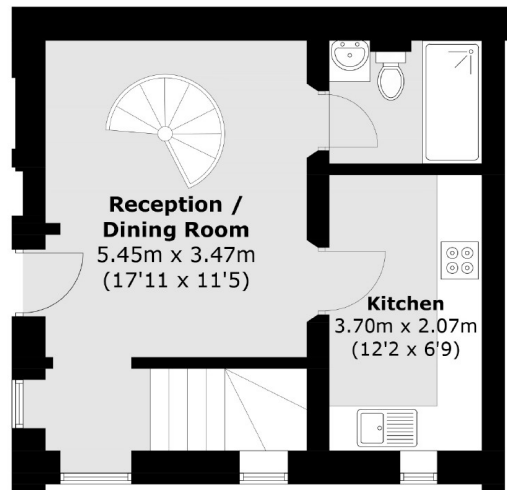
ESTATE AGENTS



**Lower Ground Floor**



**First Floor**



**Ground Floor**

Total area (approx.): 106.6 sq. m (1,147 sq. ft)

Snellers St. Margarets Sales  
36 Crown Road  
St Margarets  
TW1 3EH  
020 8892 8008  
stmargaretssales@snellers.co.uk

Energy Rating: D We aim to make our particulars both accurate and reliable. However they are not guaranteed; nor do they form part of an offer or contract. If you require clarification on any points then please contact us, especially if you're traveling some distance to view. Please note that appliances and heating systems have not been tested and therefore no warranties can be given as to their good working order