

SNELLERS

ESTATE AGENTS



The Barons, TW1

£499,950

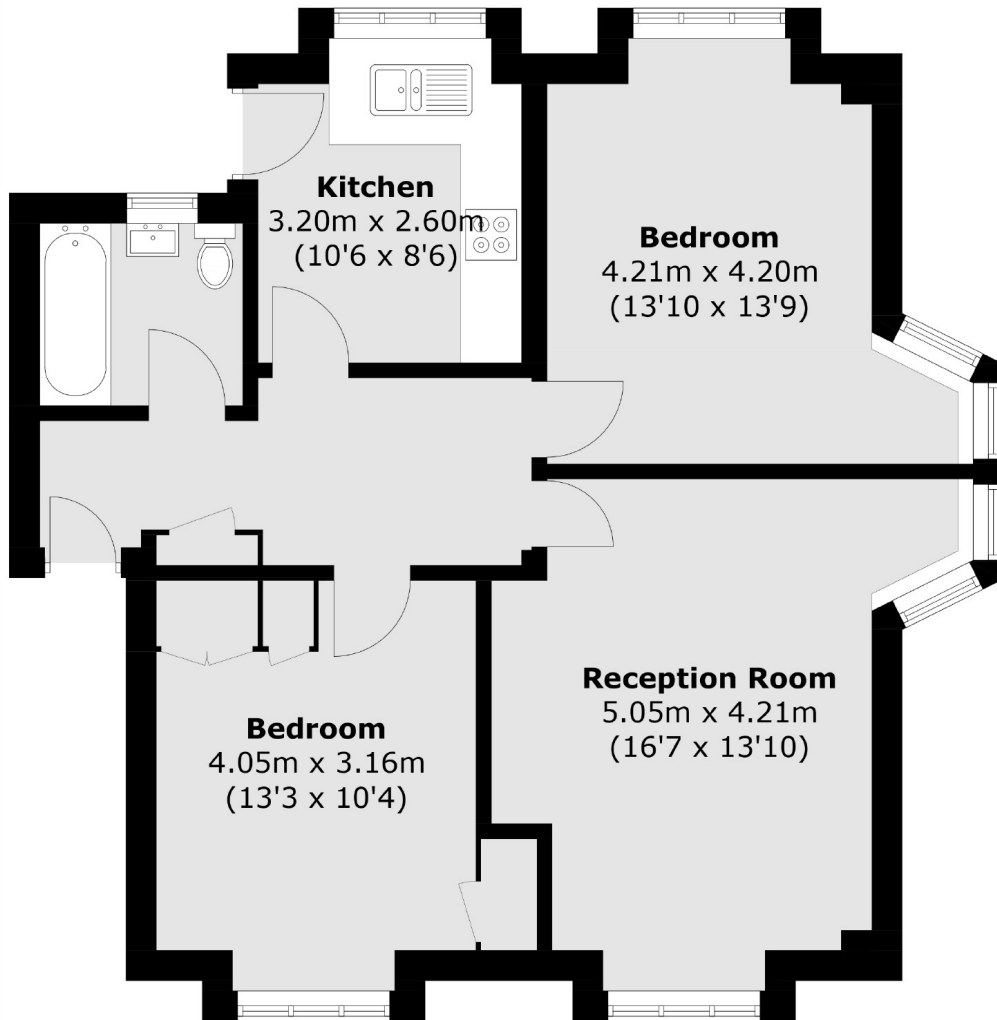
A well presented and spacious, two double bedroom top floor apartment including the share of freehold enviably located in the heart of St Margarets Village.

St Margarets Court is located just off The Barons, ideally placed in St Margarets moments away from the local amenities, St Margarets station, Marble Hill Park and is also within a short walking distance to Richmond.

- Top Floor • Two Double Bedrooms • Share of Freehold •
- Low Maintenance Costs • Good Condition • Excellent Location •

SNELLERS

ESTATE AGENTS



Total area (approx.): 67.8 sq. m (729.8 sq. ft)

Snellers St. Margarets Sales
36 Crown Road
St Margarets
TW1 3EH
020 8892 8008
stmargaretssales@snellers.co.uk

Energy Rating: We aim to make our particulars both accurate and reliable. However they are not guaranteed; nor do they form part of an offer or contract. If you require clarification on any points then please contact us, especially if you're traveling some distance to view. Please note that appliances and heating systems have not been tested and therefore no warranties can be given as to their good working order