

SNELLERS

ESTATE AGENTS



Eversley Crescent, TW7

£825,000

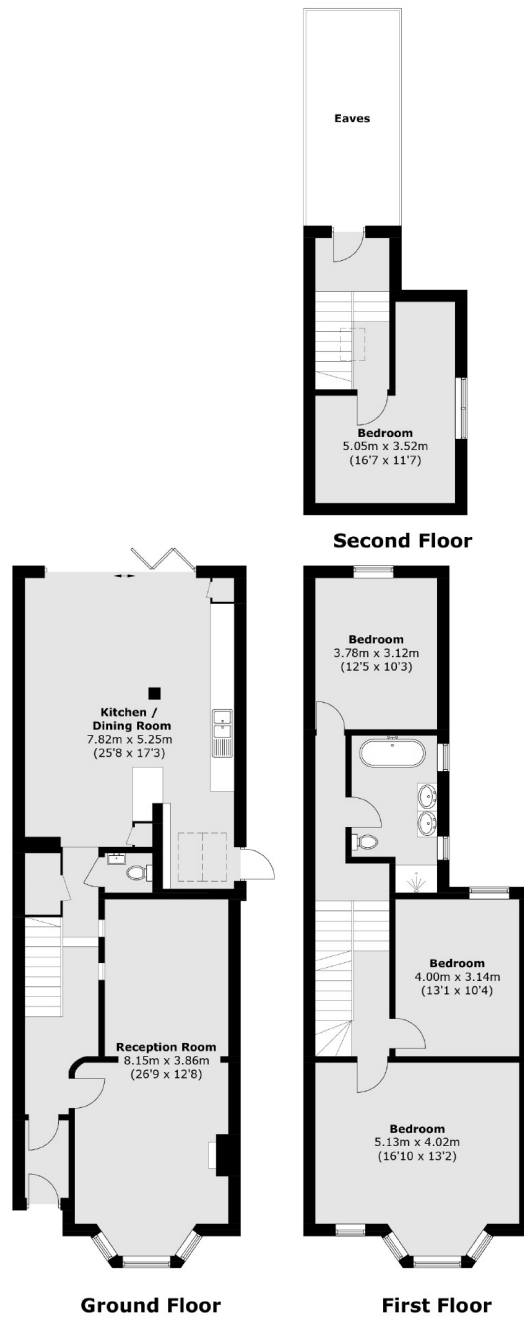
A beautifully presented and extended, semi detached four bedroom Edwardian family home offering in excess of 1,870 sq.ft of living space located on this highly desirable road in Isleworth.

Eversley Crescent is well placed for easy access to Isleworth BR Mainline station, Osterley Tube & Hounslow East tube (Piccadilly Line). The shops and amenities of Isleworth are within easy walking distance and St Margaret's & Richmond town centres are also close by.

- Edwardian • Semi Detached • Four Bedrooms •
- South-Facing Garden • Potential to Extend (STPP) • Excellent Location •

SNELLERS

ESTATE AGENTS



Total area (approx.): 173.9 sq. m (1,871.8 sq. ft)

Snellers St. Margarets Sales
36 Crown Road
St Margarets
TW1 3EH
020 8892 8008
stmargaretssales@snellers.co.uk

Energy Rating: E We aim to make our particulars both accurate and reliable. However they are not guaranteed; nor do they form part of an offer or contract. If you require clarification on any points then please contact us, especially if you're traveling some distance to view. Please note that appliances and heating systems have not been tested and therefore no warranties can be given as to their good working order