

Mulberry Crescent

West Drayton • • UB7 9AG
Offers In Excess Of: £475,000



coopers
est 1986

Mulberry Crescent

West Drayton • • UB7 9AG

This three bedroom, mid-terrace family home offers bright, well-proportioned accommodation arranged over two floors with approximately 1,200 sq.ft of total space. The ground floor features a spacious living room, a fitted kitchen and a conservatory opening onto the rear, creating a flexible and light-filled living area. Upstairs, there are three double bedrooms and a family bathroom, making it ideal for families or first-time buyers. Externally, the property benefits from a small front garden with boundary walling, spacious rear garden and useful outbuildings to the rear, all set within an established residential street.

No chain

Terraced home

Three double bedrooms

Ample living space

1200 sq.ft

Double glazing

South-facing garden

On-street parking

Popular residential location

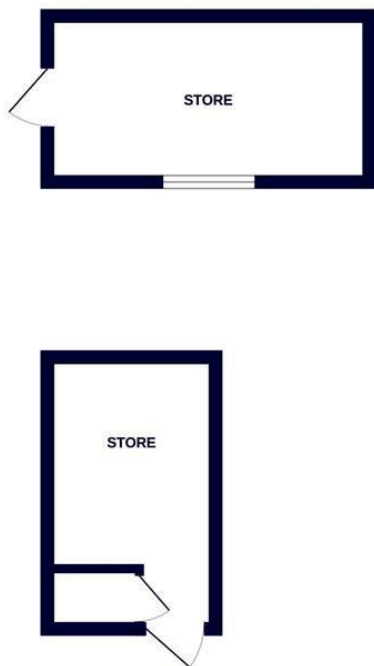
0.7 miles from West Drayton station

These particulars are intended as a guide and must not be relied upon as statements of fact. Your attention is drawn to the Important Notice on the last page.

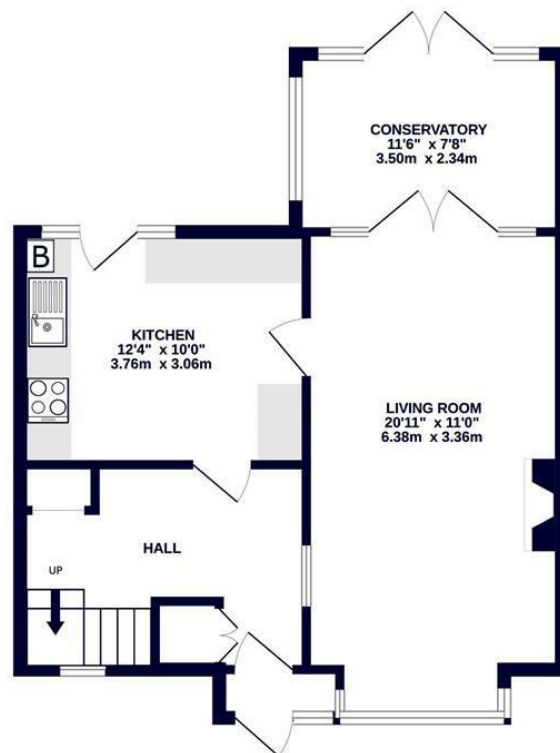




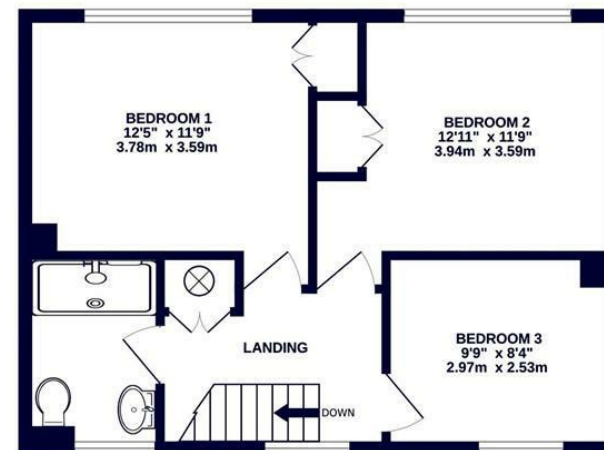
OUTBUILDINGS
184 sq.ft. (17.1 sq.m.) approx.



GROUND FLOOR
549 sq.ft. (51.0 sq.m.) approx.



1ST FLOOR
468 sq.ft. (43.4 sq.m.) approx.



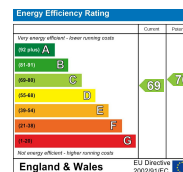
TOTAL FLOOR AREA : 1201 sq.ft. (111.6 sq.m.) approx.

Whilst every attempt has been made to ensure the accuracy of the floorplan contained here, measurements of doors, windows, rooms and any other items are approximate and no responsibility is taken for any error, omission or mis-statement. This plan is for illustrative purposes only and should be used as such by any prospective purchaser. The services, systems and appliances shown have not been tested and no guarantee as to their operability or efficiency can be given.
Made with Metropix ©2025



1 Tavistock Road, West Drayton,
Middlesex, UB7 7QT
westdrayton@coopersresidential.co.uk

CoopersResidential.co.uk



Important Notice: These particulars, whilst believed to be accurate are set out as a general outline only for guidance and do not constitute any part of an offer or contract. Intending purchasers should not rely on them as statements or representation of fact, but must satisfy themselves by inspection or otherwise has the authority to make or give any representation or warranty in respect of the property.