

Foxglove Close

West Drayton • • UB7 9GA

Guide Price: £450,000



coopers
est 1986

Foxglove Close

West Drayton • • UB7 9GA

A contemporary and stylish two bedroom terraced home offering light filled accommodation throughout ready made for the modern family. This well appointed home enjoys 812 sq ft of accommodation and briefly consists of hallway, downstairs cloakroom, 9ft modern fitted kitchen and a 16ft living room with ample room for dining and french door leading to the rear garden. To the first floor are the two well proportioned double bedrooms, both of which benefit from built-in wardrobes and lastly the exquisite family bathroom.

Modern terraced home

Built in 2016 with building warranty remaining

Two double bedrooms with built-in wardrobes

Exquisite family bathroom & W.C

Fantastic condition throughout

812 sq.ft

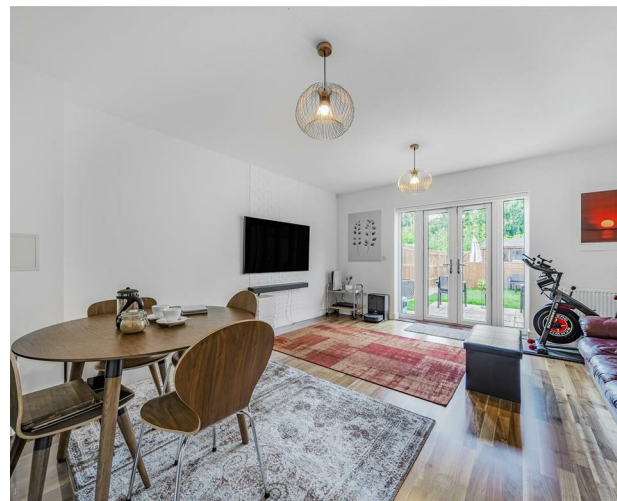
South-facing rear garden

Two allocated parking spaces

Sought after development

0.4 miles from West Drayton train station

These particulars are intended as a guide and must not be relied upon as statements of fact. Your attention is drawn to the Important Notice on the last page.





Property

A contemporary and stylish two bedroom terraced home offering light filled accommodation throughout ready made for the modern family. This well appointed home enjoys 812 sq ft of accommodation and briefly consists of hallway, downstairs cloakroom, 9ft modern fitted kitchen and a 16ft living room with ample room for dining and french door leading to the rear garden. To the first floor are the two well proportioned double bedrooms, both of which benefit from built-in wardrobes and lastly the exquisite family bathroom.

Outside

The south-facing rear garden is a real sun trap and has a patio area closest to the house with the majority of the garden being laid to lawn, there is also a storage shed to the rear. The property also benefits from having two allocated parking spaces.

Location

Foxglove Grove is a quiet cul-de-sac found within the highly prized 'Drayton Garden Village' development which is arguably West Drayton's most popular development, it offers a range of amenities such as a local Sainsbury's, children's parks, open green spaces and function hall. Drayton Garden Village is located just a short distance from West Drayton High Street with its range of independent shops, restaurants and good transport links via various bus routes and the Train Station providing fast and frequent train access in and out of London via the superb Elizabeth Line. Heathrow Airport, Stockley Business Park and the M4 are all within easy reach.





Schools:

West Drayton Primary School 0.3 miles
St Matthew's CofE Primary School 0.6 miles
Cherry Lane Primary School 0.7 miles



Train:

West Drayton Station 0.4 miles
Hayes & Harlington Station 1.9 miles
Iver Station 1.9 miles



Car:

M4, A40, M25, M40



Council Tax Band:

D

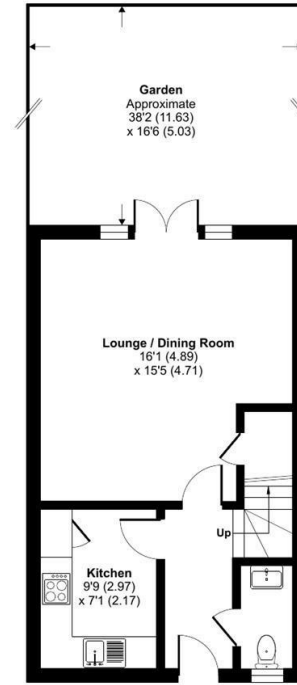
(Distances are straight line measurements from centre of postcode)



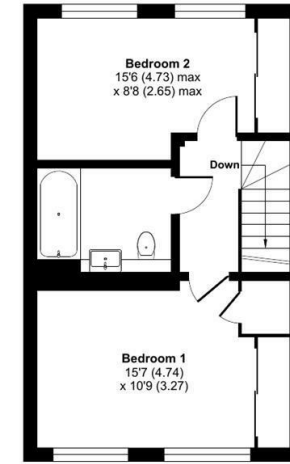
Foxglove Close, West Drayton, UB7

Approximate Area = 812 sq ft / 75.4 sq m

For identification only - Not to scale



GROUND FLOOR



FIRST FLOOR



Floor plan produced in accordance with RICS Property Measurement Standards incorporating International Property Measurement Standards (IPMS2 Residential). © nrichecom 2024. Produced for Coopers. REF: 1178156

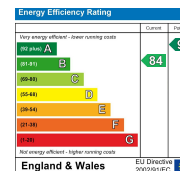


01895 459 950

1 Tavistock Road, West Drayton,
Middlesex, UB7 7QT

westdrayton@coopersresidential.co.uk

CoopersResidential.co.uk



Important Notice: These particulars, whilst believed to be accurate are set out as a general outline only for guidance and do not constitute any part of an offer or contract. Intending purchasers should not rely on them as statements or representation of fact, but must satisfy themselves by inspection or otherwise has the authority to make or give any representation or warranty in respect of the property.

coopers
est 1986