

# 145 Waterloo Road

Uxbridge • Middlesex • UB8 2FT

Guide Price: £250,000



coopers  
est 1986



# 145 Waterloo Road

**Uxbridge • Middlesex • UB8 2FT**

This modern one bedroom apartment boasts spacious rooms and light filled interiors throughout enjoying added benefits of a balcony, communal gardens, allocated parking and a bike shed. This spacious apartment is great for First Time Buyer / Downsize or Investors looking to generate a high yield. Woodgate Court is conveniently located just over 0.5 miles from Uxbridge town centre with its transport links into London and shopping facilities.

One bedroom apartment

Chain free

Fantastic location

Allocated parking

Private balcony

Communal gardens

108 years remaining

Nearby to local amenities

Closeby to numerous transport links

Easy access to A40 / M25

These particulars are intended as a guide and must not be relied upon as statements of fact. Your attention is drawn to the Important Notice on the last page.





### Property

The property features an open-plan living area with access to a private balcony, stylish kitchen with white gloss units, integrated oven and grill, built in fridge/freezer and space for white goods. There is one double bedroom with a fitted wardrobe and completing the apartment is spacious modern bathroom. The property also benefits an entry phone system, communal hallway with stairs to the first floor and also a long lease.

### Outside

The property itself benefits from an allocated parking space along with ample parking on the surrounding roads benefiting Hillingdon residents. Woodgate Court also has the added luxury of well maintained communal gardens allowing for an outdoor space in the summer months. The apartment itself has the added bonus of a private balcony directly joining to the open plan living area, great for entertaining.

### Location

Waterloo Road is a popular residential road located approximately half mile away from Uxbridge town centre with its vast array of shopping facilities, restaurants, bars, bus links and tube station offering both the Metropolitan and Piccadilly line services. The property also embraces easy access to Brunel University and Hillingdon Hospital. There are a number of popular schools close by such as St Mary's and Whitehall. The A40/M40 and M4 are a short drive away offering links to London, Heathrow and the Home Counties.





### Schools:

Whitehall Infant and Junior School 0.3 miles  
 St Mary's Catholic Primary School 0.4 miles  
 Uxbridge High School 0.7 miles



### Train:

Uxbridge 0.7 miles  
 Hillingdon 2.0 miles  
 West Drayton 2.2 miles



### Car:

M4, A40, M25, M40



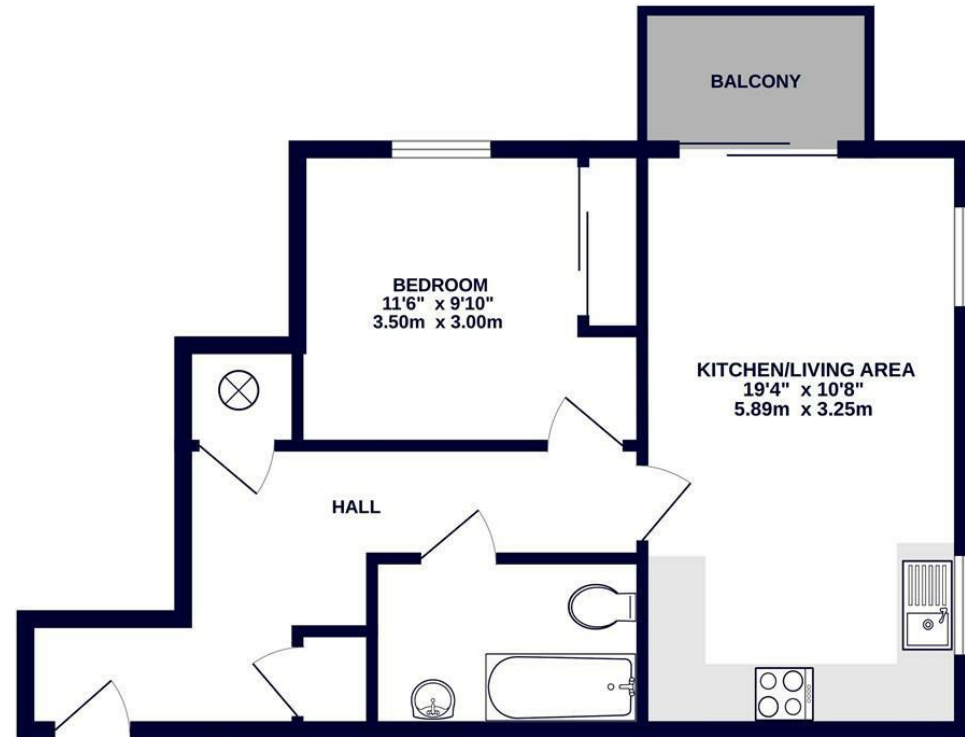
### Council Tax Band:

C

(Distances are straight line measurements from centre of postcode)



2ND FLOOR  
 496 sq.ft. (46.1 sq.m.) approx.



coopers  
 est 1986

TOTAL FLOOR AREA: 496 sq.ft. (46.1 sq.m.) approx.

Whilst every attempt has been made to ensure the accuracy of the floorplan contained here, measurements of doors, windows, rooms and any other items are approximate and no responsibility is taken for any error, omission or mis-statement. This plan is for illustrative purposes only and should be used as such by any prospective purchaser. The services, systems and appliances shown have not been tested and no guarantee as to their operability or efficiency can be given.  
 Made with Metropix ©2025



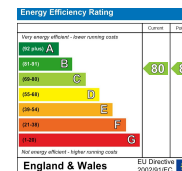
coopers  
 est 1986

01895 257 566

1 Vine Street, Uxbridge,  
 Middlesex, UB8 1QE

us@coopersresidential.co.uk

CoopersResidential.co.uk



Important Notice: These particulars, whilst believed to be accurate are set out as a general outline only for guidance and do not constitute any part of an offer or contract. Intending purchasers should not rely on them as statements or representation of fact, but must satisfy themselves by inspection or otherwise has the authority to make or give any representation or warranty in respect of the property.