

Anslow Gardens

Iver • Buckinghamshire • SL0 0BW
Guide Price: £385,000



coopers
est 1986

Anslow Gardens

Iver • Buckinghamshire • SL0 0BW

This charming two bedroom, ground floor maisonette is located in the sought after area of Anslow Gardens, Iver. The property boasts a spacious living area, with a kitchen providing ample storage for all your needs. The property also includes two spacious double bedrooms which are generously sized and offers plenty of natural light throughout.

A standout feature of this property is the large garden, providing the perfect space to host barbecues and relax in summer months. Additionally, the garden includes a charming summerhouse, which can serve as a delightful retreat and place to unwind.

Situated in a quiet neighbourhood, this maisonette benefits from easy access to local amenities, whilst the excellent transport links make commuting to London or further afield straightforward.

Two double bedrooms

Ground floor maisonette

Private well maintained garden

No onward chain

Off street parking

Garden Summerhouse

Total floor area of 941sq ft.

Elizabeth Line close by

Highly regarded schools nearby

Easy access to M40/M25

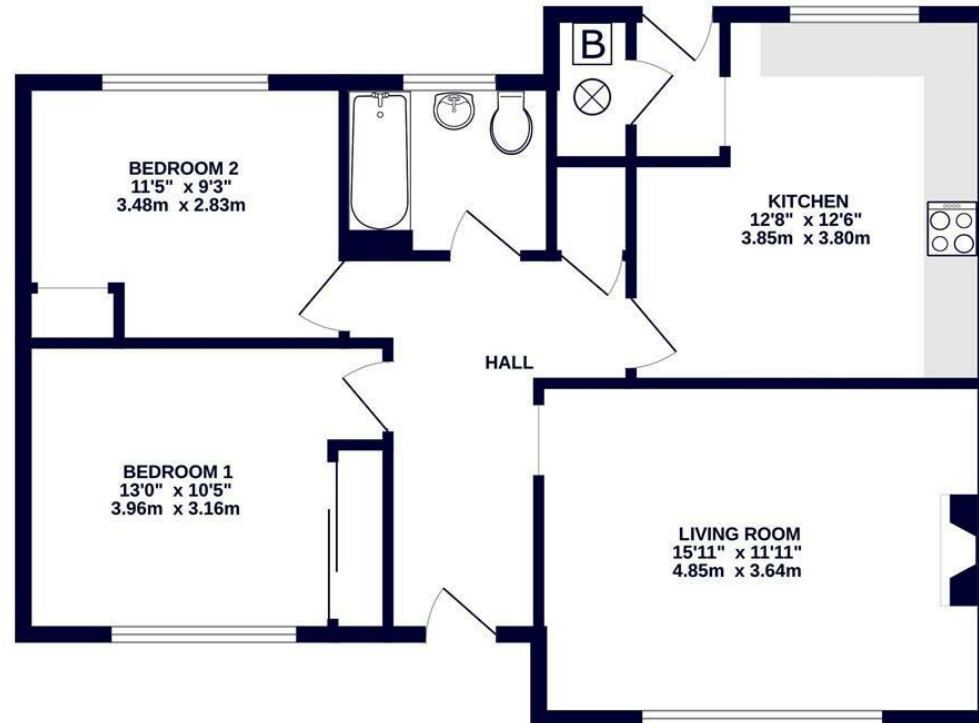
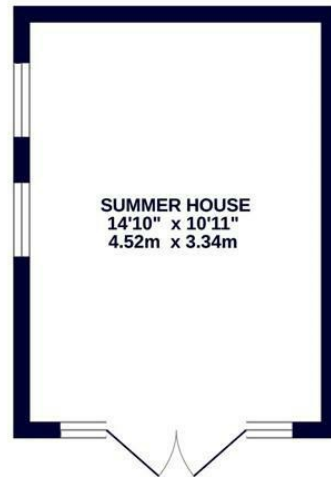
These particulars are intended as a guide and must not be relied upon as statements of fact. Your attention is drawn to the Important Notice on the last page.





OUTBUILDING
162 sq.ft. (15.1 sq.m.) approx.

GROUND FLOOR
752 sq.ft. (69.8 sq.m.) approx.



coopers
est 1986

TOTAL FLOOR AREA : 914 sq.ft. (84.9 sq.m.) approx.

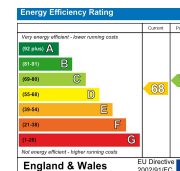
Whilst every attempt has been made to ensure the accuracy of the floorplan contained here, measurements of doors, windows, rooms and any other items are approximate and no responsibility is taken for any error, omission or mis-statement. This plan is for illustrative purposes only and should be used as such by any prospective purchaser. The services, systems and appliances shown have not been tested and no guarantee as to their operability or efficiency can be given.
Made with Metropix ©2026



coopers
est 1986

**1 Vine Street, Uxbridge,
Middlesex, UB8 1QE**
us@coopersresidential.co.uk

CoopersResidential.co.uk



Important Notice: These particulars, whilst believed to be accurate are set out as a general outline only for guidance and do not constitute any part of an offer or contract. Intending purchasers should not rely on them as statements or representation of fact, but must satisfy themselves by inspection or otherwise has the authority to make or give any representation or warranty in respect of the property.