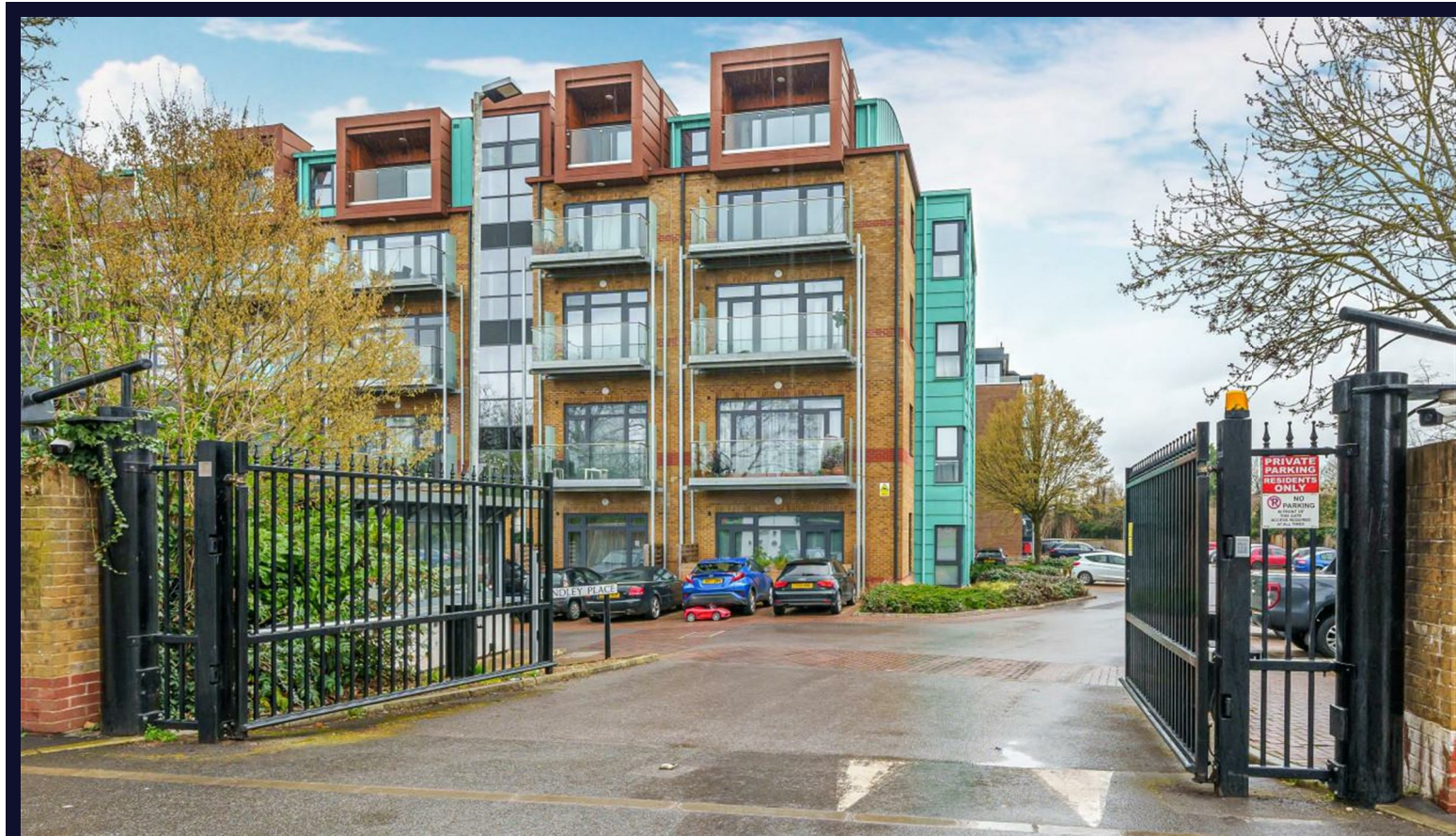


# Jessop Court

Uxbridge • Middlesex • UB8 2FA

Guide Price: £270,000



coopers  
est 1986



# Jessop Court

**Uxbridge • Middlesex • UB8 2FA**

This stylish one bedroom apartment in Jessop Court, Brindley Place, offers contemporary living in a gated development with concierge service in Uxbridge. Situated on the second floor, the property boasts a sleek open plan kitchen with integrated appliances, seamlessly leading into a spacious, naturally lit living area with a Juliette balcony. Perfectly positioned for convenience and comfort, this apartment is ideal for professionals or first time buyers.

One bedroom modern apartment

Second floor

Juliette Balcony

Lift

Open plan living space

Allocated Parking

Concierge

Private & Gated Development

552.sq.ft

Sought After Location

These particulars are intended as a guide and must not be relied upon as statements of fact. Your attention is drawn to the Important Notice on the last page.







### Location

Conveniently located near key local amenities, including Hillingdon Hospital, Brunel University, and Stockley Business Park, this property offers exceptional accessibility. Excellent bus and road connections provide easy access to Heathrow Airport, the M4, and the M25. Uxbridge Underground Station, with its Metropolitan and Piccadilly Lines, is just a short drive away, alongside Uxbridge High Street, which features a vibrant array of shops, restaurants, and bars. Additionally, the property is close to West Drayton High Street, offering the convenience of a mainline station, Crossrail services, and the newly opened Elizabeth Line, ensuring seamless connectivity.

### Property

This second floor, one bedroom apartment, offers contemporary living in a gated development with concierge service in Uxbridge. The property boasts a sleek open plan kitchen with integrated appliances, seamlessly leading into a spacious, naturally lit living area with a Juliette balcony. The comfortable bedroom includes built in wardrobes for efficient storage, while the generously sized bathroom features a modern shower bath, combining practicality with elegance.

### Outside

Jessop Court is situated within a secure gated development with key code access and the convenience of an on-site concierge available daily from 9 AM to 5 PM. The property includes the added benefit of an allocated parking space. The apartment further enhances its appeal with a charming Juliette balcony, offering a touch of luxury to the living space.



### Schools:

Cowley St Laurence Primary School 0.3 miles  
Meadowview High school 0.7 miles  
Pield Heath School 0.8 miles



### Train:

West Drayton Station 0.8 miles  
Uxbridge station 1.7 miles  
Iver station 1.4 miles



### Car:

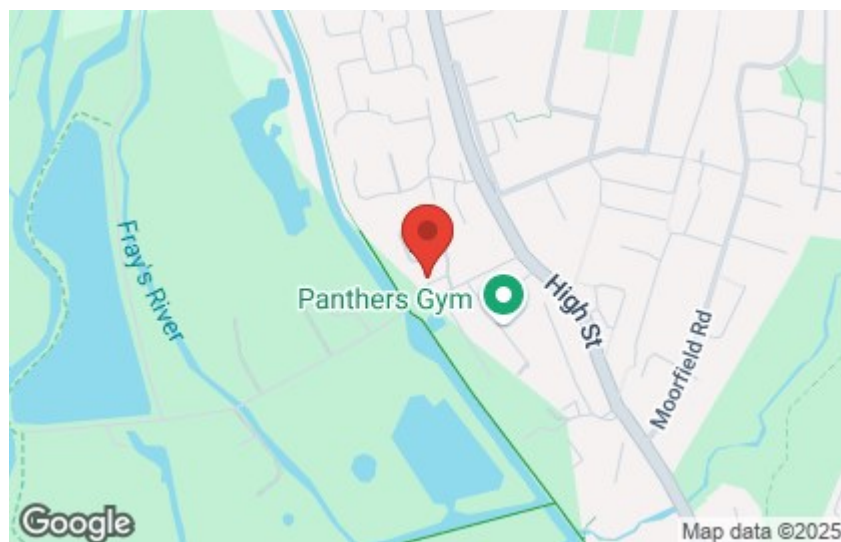
M4, A40, M25, M40



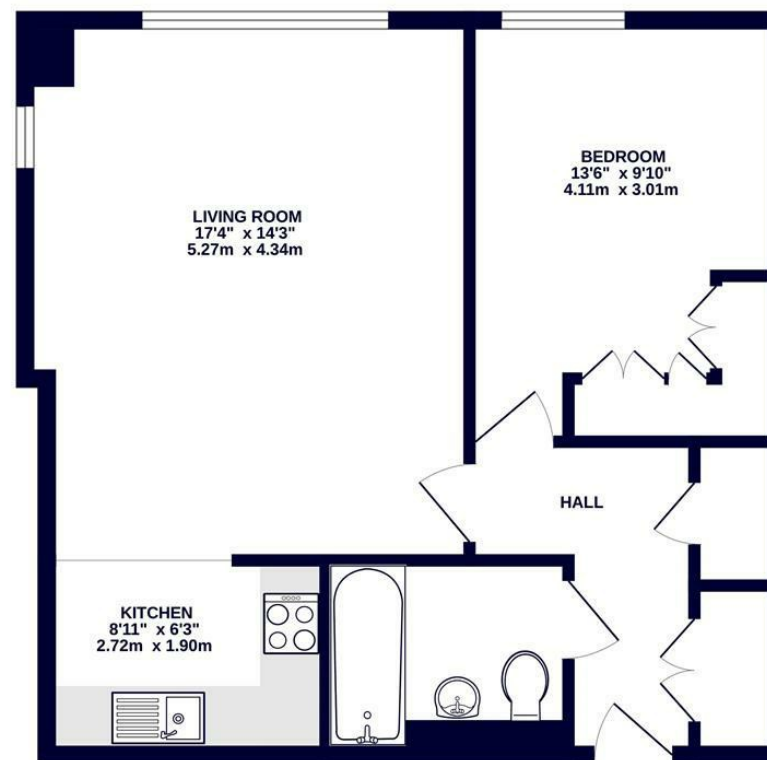
### Council Tax Band:

C

(Distances are straight line measurements from centre of postcode)



2ND FLOOR  
552 sq.ft. (51.3 sq.m.) approx.



coopers  
est 1986

TOTAL FLOOR AREA: 552 sq.ft. (51.3 sq.m.) approx.

Whilst every attempt has been made to ensure the accuracy of the floorplan contained here, measurements of doors, windows, rooms and any other items are approximate and no responsibility is taken for any error, omission or mis-statement. This plan is for illustrative purposes only and should be used as such by any prospective purchaser. The services, systems and appliances shown have not been tested and no guarantee as to their operability or efficiency can be given.  
Made with Metropix i30025

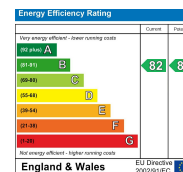
coopers  
est 1986

01895 257 566

1 Vine Street, Uxbridge,  
Middlesex, UB8 1QE

us@coopersresidential.co.uk

CoopersResidential.co.uk



Important Notice: These particulars, whilst believed to be accurate are set out as a general outline only for guidance and do not constitute any part of an offer or contract. Intending purchasers should not rely on them as statements or representation of fact, but must satisfy themselves by inspection or otherwise has the authority to make or give any representation or warranty in respect of the property.