

Brand Avenue

Uxbridge • Middlesex • UB10 0FS
Guide Price: £385,000



coopers
est 1986

Brand Avenue

Uxbridge • Middlesex • UB10 0FS

This well-presented and generously spacious ground floor apartment sits just a stones throw from Uxbridge Town Centre. A modern two bedroom, one bathroom apartment spreads across 732sqft including a lounge, kitchen/diner, hallway, private terrace & one allocated parking space. It is conveniently located for those needing walking distance access to the Uxbridge Underground Station which includes rail lines Metropolitan/Piccadilly. This makes a perfect opportunity for those looking to get themselves onto the property ladder even an investment seeking high returns.

Luxury apartment

Two bedrooms

Allocated Parking

Walking distance to Uxbridge

Spacious Living

Town Centre Apartment

Outside Terrace

Ground Floor Apartment

732 Sqft

Well presented

These particulars are intended as a guide and must not be relied upon as statements of fact. Your attention is drawn to the Important Notice on the last page.





Location

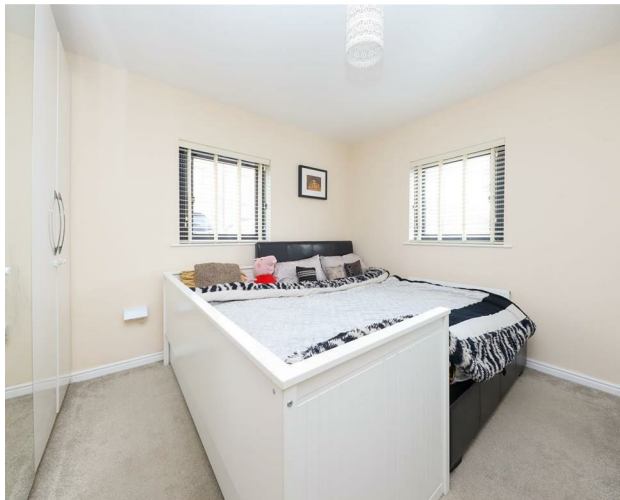
St Andrew's Park is located within a 10 minute walk from Uxbridge Town centre, providing easy access to an array of shopping facilities including two shopping centres, a bustling High Street with a choice of cafes, bars and restaurants and Uxbridge train and bus station. The area is also served by a number of well-regarded infant, primary and secondary schools and various parks including the 37 acre Dowding Park.

Property

This well presented and spacious two bedroom, one bathroom town centre apartment spans across 732 sqft of useable living space including a lounge, kitchen/diner, hallway, private terrace & one allocated parking space. The property is located in the well-known St Andrews Park Development, only a stone's throw from Uxbridge Town Centre, and offers well-kept and visually appealing grounds for people looking for lovely local walks.

Outside

There are well-kept communal gardens and allocated parking for one car.





Schools:

Uxbridge High School 0.1 miles
Whitehall Infant and Junior Schools 0.4 miles
John Locke Academy 0.5 miles



Train:

Uxbridge 0.5 miles
Hillingdon 1.4 miles
West Drayton 2.0 miles



Car:

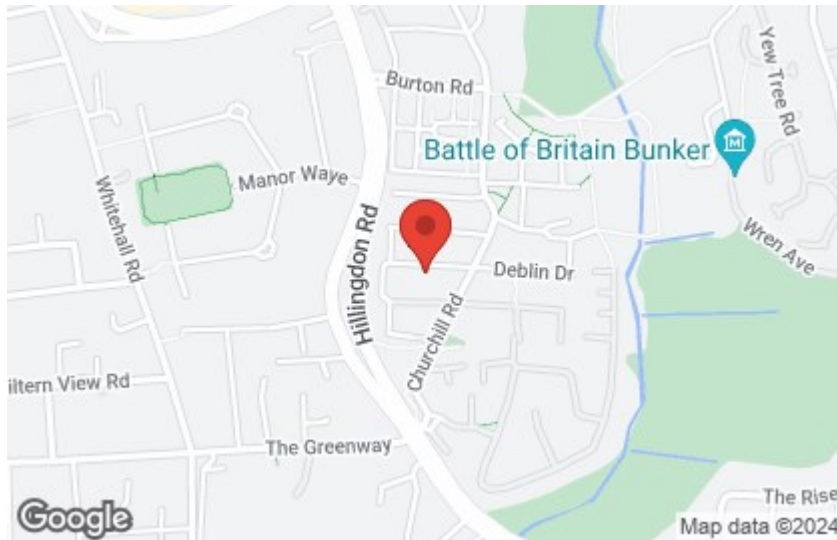
M4, A40, M25, M40



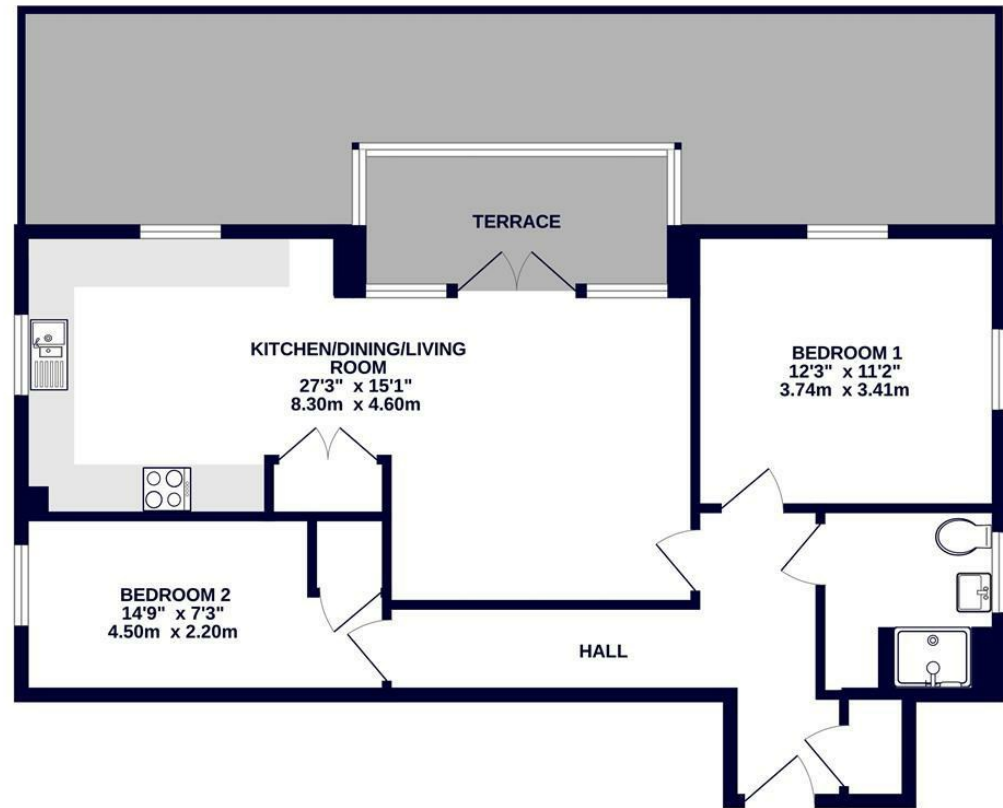
Council Tax Band:

D

(Distances are straight line measurements from centre of postcode)



GROUND FLOOR 732 sq.ft. (68.0 sq.m.) approx.



TOTAL FLOOR AREA: 732 sq.ft. (68.0 sq.m.) approx.

Whilst every attempt has been made to ensure the accuracy of the floorplan contained here, measurements of doors, windows, rooms and any other items are approximate and no responsibility is taken for any error, omission or mis-statement. This plan is for illustrative purposes only and should be used as such by any prospective purchaser. The services, systems and appliances shown have not been tested and no guarantee as to their operability or efficiency can be given.
Made with Metropix ©2024

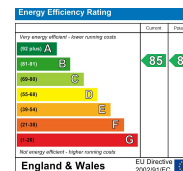
01895 257 566

1 Vine Street, Uxbridge,
Middlesex, UB8 1QE

us@coopersresidential.co.uk

CoopersResidential.co.uk

coopers
est 1986



Important Notice: These particulars, whilst believed to be accurate are set out as a general outline only for guidance and do not constitute any part of an offer or contract. Intending purchasers should not rely on them as statements or representation of fact, but must satisfy themselves by inspection or otherwise has the authority to make or give any representation or warranty in respect of the property.