



 Moovahome.co.uk

Celsus Grove, Old Town, Swindon, SN1 4GS

£310,000

3 3 1



A deceptively spacious and charming three-bedroom terraced home, ideally located in the sought-after residential area of Okus, Old Town, Swindon. This delightful property is within walking distance of Old Town, with its wide selection of shops, bars and restaurants, while also benefiting from excellent access to Swindon Town Centre. Offering tasteful updates throughout, this home is move-in ready and further benefits from two allocated parking spaces.

Key Features

- Three-bedroom terraced home in a prime Old Town location
- En-suite to master bedroom
- Spacious living and dining rooms
- Modern fitted kitchen with integrated appliances
- Private rear garden
- Two allocated parking spaces
- Walking distance to Old Town's amenities
- Accommodation

Ground Floor

Entrance Hall

Living Room (5.61m x 3.71m) – A generous reception space with a bay window to the front, allowing plenty of natural light.

Dining Room (3.23m x 2.82m) – With French doors opening onto the rear garden, perfect for entertaining.

Kitchen (3.23m x 2.51m) – A modern fitted kitchen with a range of wall and base units, stainless steel sink, integrated double oven with gas hob and extractor fan, and space/plumbing for a washing machine and dishwasher.

First Floor

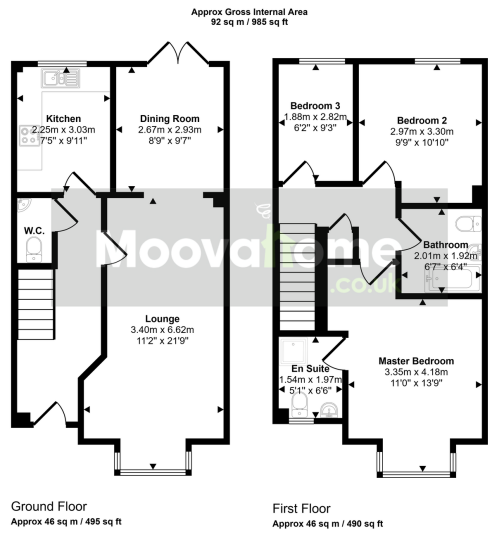
Bedroom One (4.14m x 3.66m) – A spacious double with window to the front and private en-suite comprising WC, wash hand basin and shower cubicle.

Bedroom Two (3.10m x 3.23m) – A comfortable double with rear aspect.

Bedroom Three (3.23m x 2.24m) – A well-sized third bedroom with window to the rear.

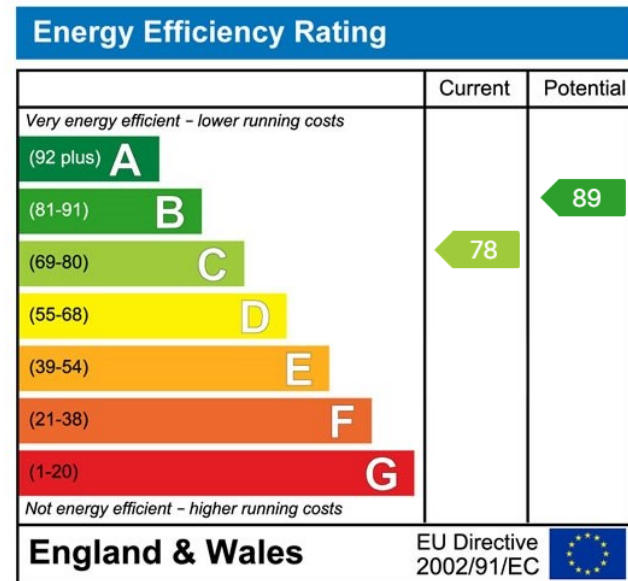
Family Bathroom – Half tiled with WC, wash hand basin and panelled bath with shower over and glass screen.





This floorplan is only for illustrative purposes and is not to scale. Measurements of rooms, doors, windows, and any items are approximate and no responsibility is taken for any error, omission or mis-statement. Icons of items such as bathroom suites are representations only and may not look like the real items. Made with Made Snaggy 360.

- Two allocated spaces (also additional on street visitors)
- En-suite to master bedroom
- Spacious Living and Dining Rooms
- Walking distance to Old Town
- Three-bedroom terraced home in a prime Old Town location
- Modern features throughout
- Modern fitted kitchen with intergrated appliances



www.moovahome.co.uk

Unit 20 Ergo Business Park, Kelvin Road, Swindon SN3 3JW

Telephone 01793 512345

hello@moovahome.co.uk