



 Moovahome.co.uk



Clary Road, Swindon, SN2 2ST

£325,000

3 2 3





Moovahome are pleased to offer for sale this EXTENDED THREE BED DETACHED property situated in the popular location of Woodhall Park. The stunning property boasts TWO RECEPTION ROOMS, three good sized bedrooms and a LARGE NON-OVERLOOKED GARDEN, this home is not to miss.

#### Ground Floor

Lounge: 3.53m x 4.41m  
Kitchen: 4.59m x 2.97m  
Utility: 3.22m x 2.50m  
Shower Room:  
Reception Room: 2.36m x 4.93m

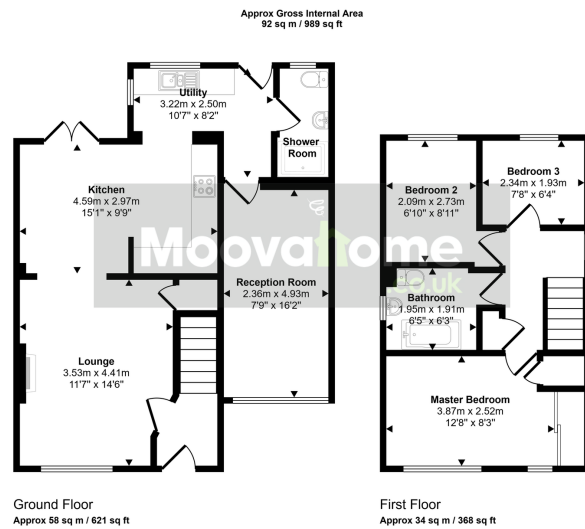
#### First Floor

Master Bedroom: 3.87m x 2.52m  
Bedroom Two: 2.09m x 2.73m  
Bedroom Three: 1.93m x 2.34m  
Bathroom: 1.95m x 1.91m

What you can expect from Moovahome when buying:

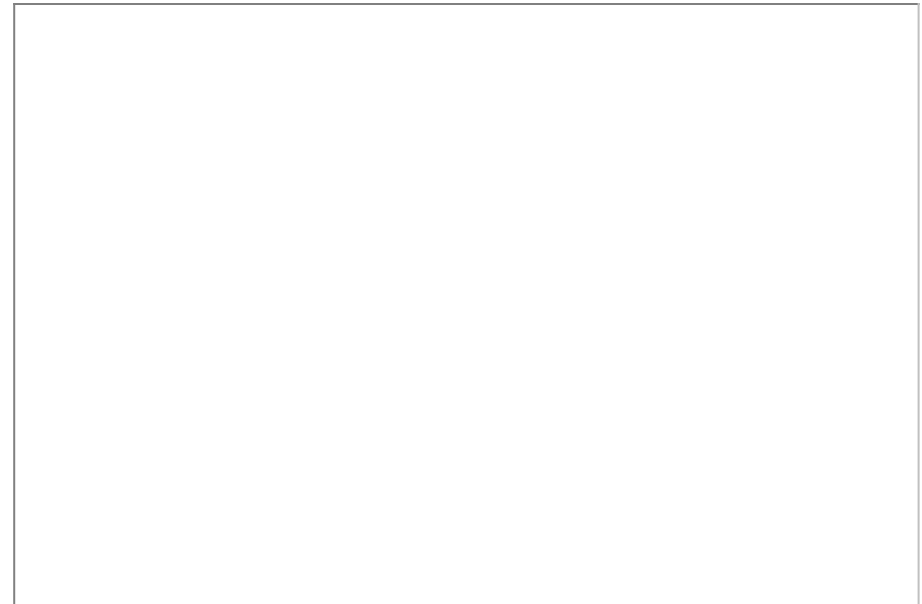
1. No Gazumping
2. Weekly update son sale progression
3. Whatsapp Group for buyers and our team
4. Hand delivery of keys on completion





This floorplan is only for illustrative purposes and is not to scale. Measurements of rooms, doors, windows, and any items are approximate and no responsibility is taken for any error, omission or mis-statement. Icons of items such as bathroom suites are representations only and may not look like the real items. Made with Made Snappy 360.

- West Facing Garden
- Two Bathrooms
- Two Lounges
- Parking for up to 3 cars
- (Approx.) Sq.footage 989 sq ft



[www.moovahome.co.uk](http://www.moovahome.co.uk)

Lettings: Mr A. Cain T/A Moovahome  
Moovahome, Unit 20 Ergo Business Park, Kelvin Road, Swindon SN3 3JW

Unit 20 Ergo Business Park, Kelvin Road, Swindon SN3 3JW

Telephone 01793 512345

[hello@moovahome.co.uk](mailto:hello@moovahome.co.uk)

Sales: Moovahome is a trading name of Moovahome Ltd.  
Registered Office: Unit 20 Ergo Business Park, Kelvin Road, Swindon SN3 3JW